

NODI TIPOLOGICI COPERATURE

GALIMBERTI
LEGGNO E BIOEDILIZIA

INDICE

TETTO A FALDE

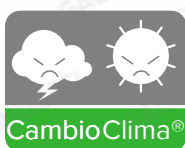
Geometrie	01
Abbaini	02
Timpani e terrazzi	03
Gronda alta	04
Gronda ribassata	05
Colmo	06
Posizione isolante	07
Luce naturale	08
Elementi passanti - Luce	10
Elementi passanti - Elettrico	13
Smaltimento acque - Canale sagomato	14
Smaltimento acque - Canale tondo	15
Smaltimento acque - Canale quadrato	16
Smaltimento acque	17
Elementi passanti - Aria	18
Elementi passanti - Fumi	21
Fotovoltaico	22
Palo antenna	24
Linea vita	25
Strato di ventilazione	26

TETTO PIANO

Geometrie	27
Cassoni su correa in legno	28
Cassonetto per infissi	29
Elementi passanti - Luce	30
Elementi passanti - Aria	31
Elementi passanti - Fumi	32
Elementi passanti - Elettrico	33
Linea vita	34

CAMBIOCLIMA

Il marchio **CambioClima**[®] rappresenta gli elementi e le soluzioni tecniche che Galimberti propone per garantire maggiore sicurezza nei confronti degli eventi meteorologici estremi causati dal cambiamento climatico.



Gli elementi contrassegnati con * sono *patent pending*



01 - Con aggetto



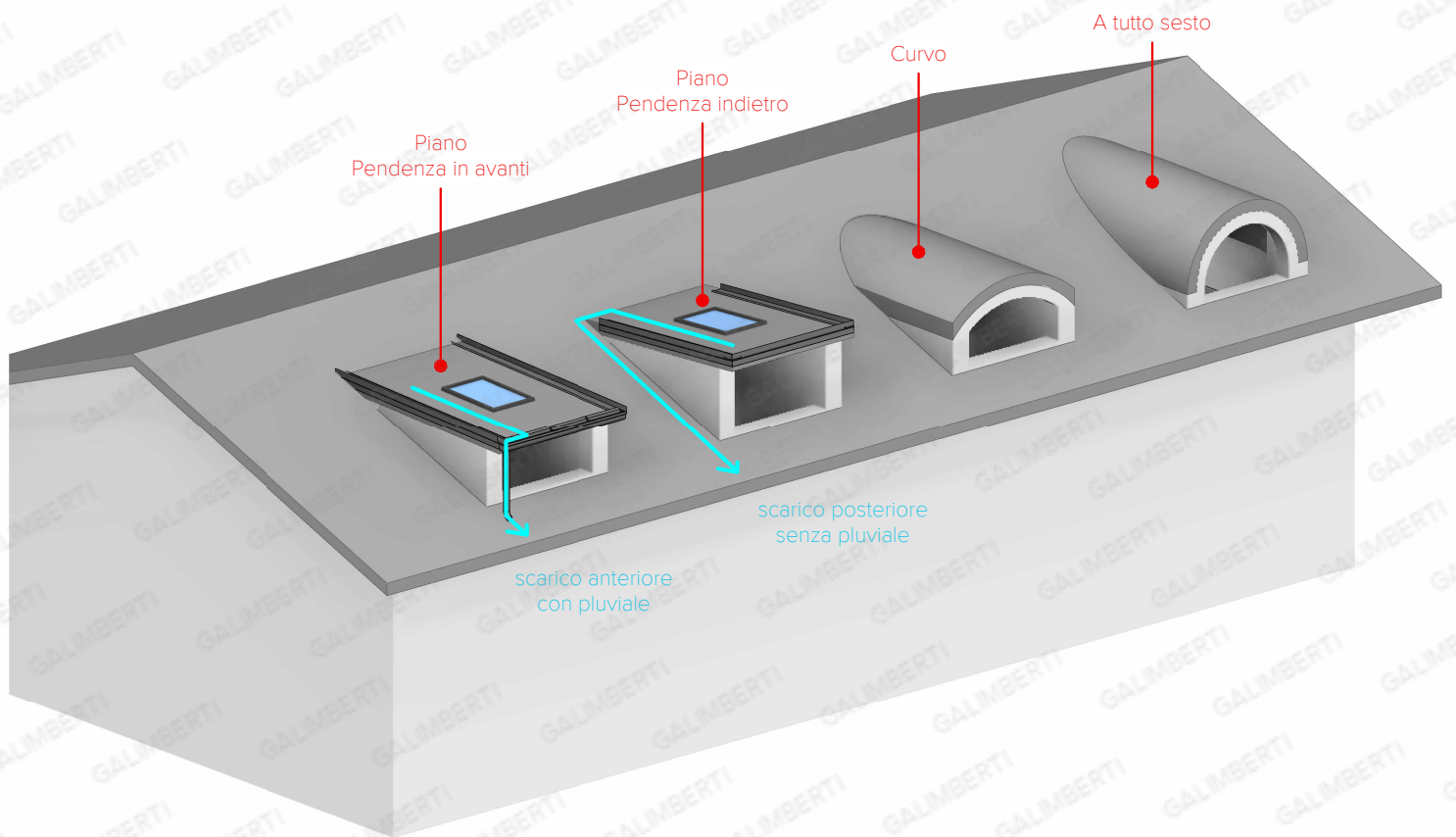
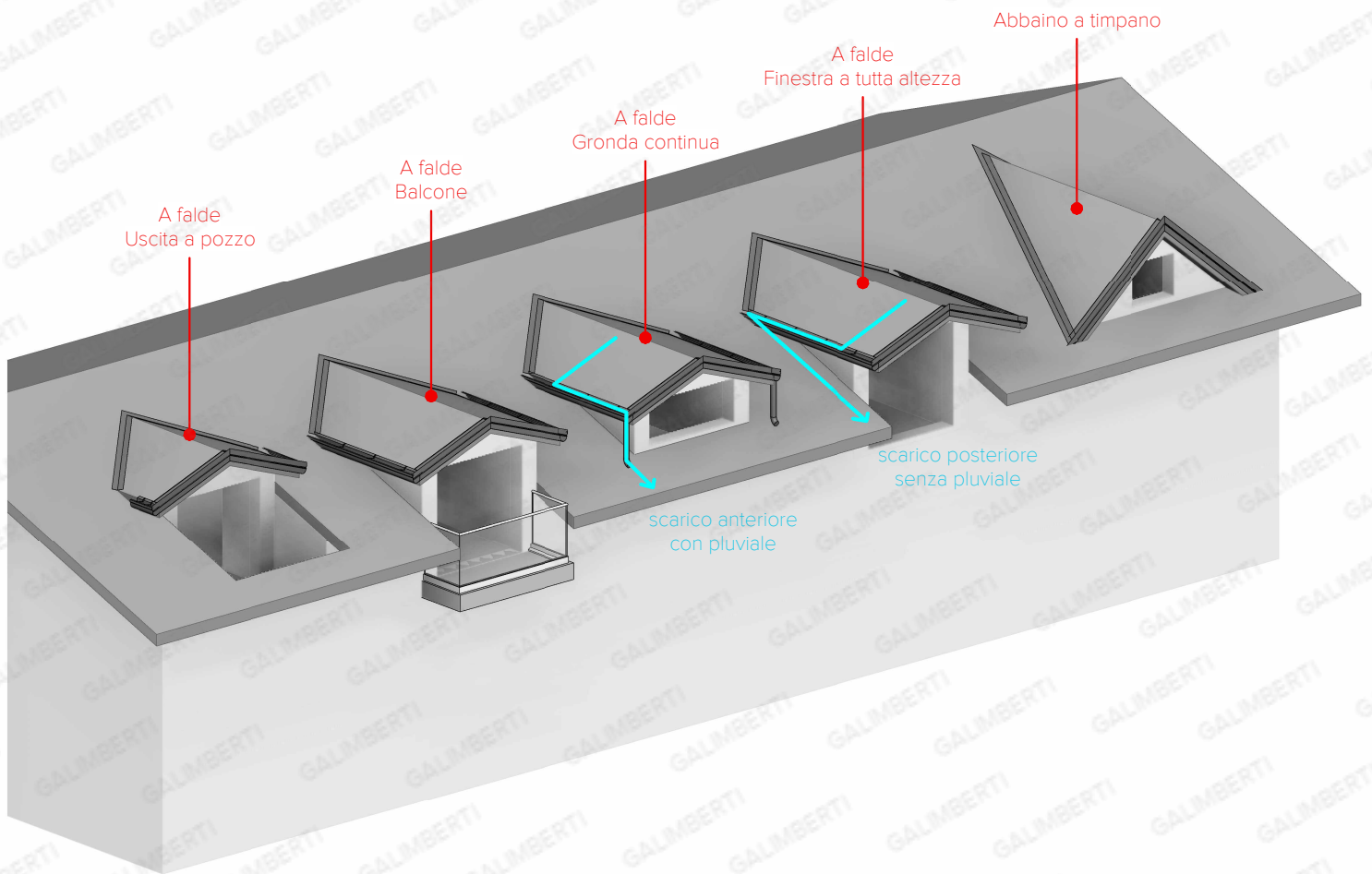
02 - Senza aggetto

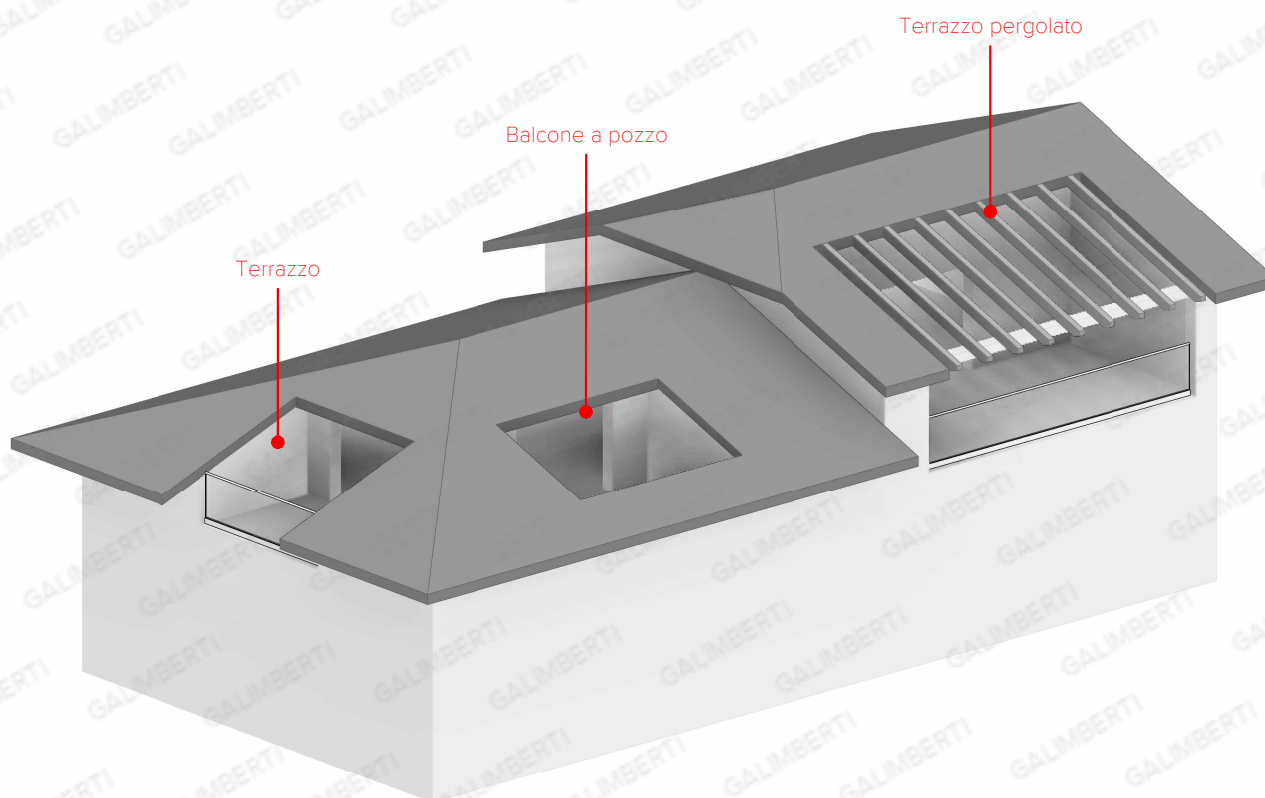
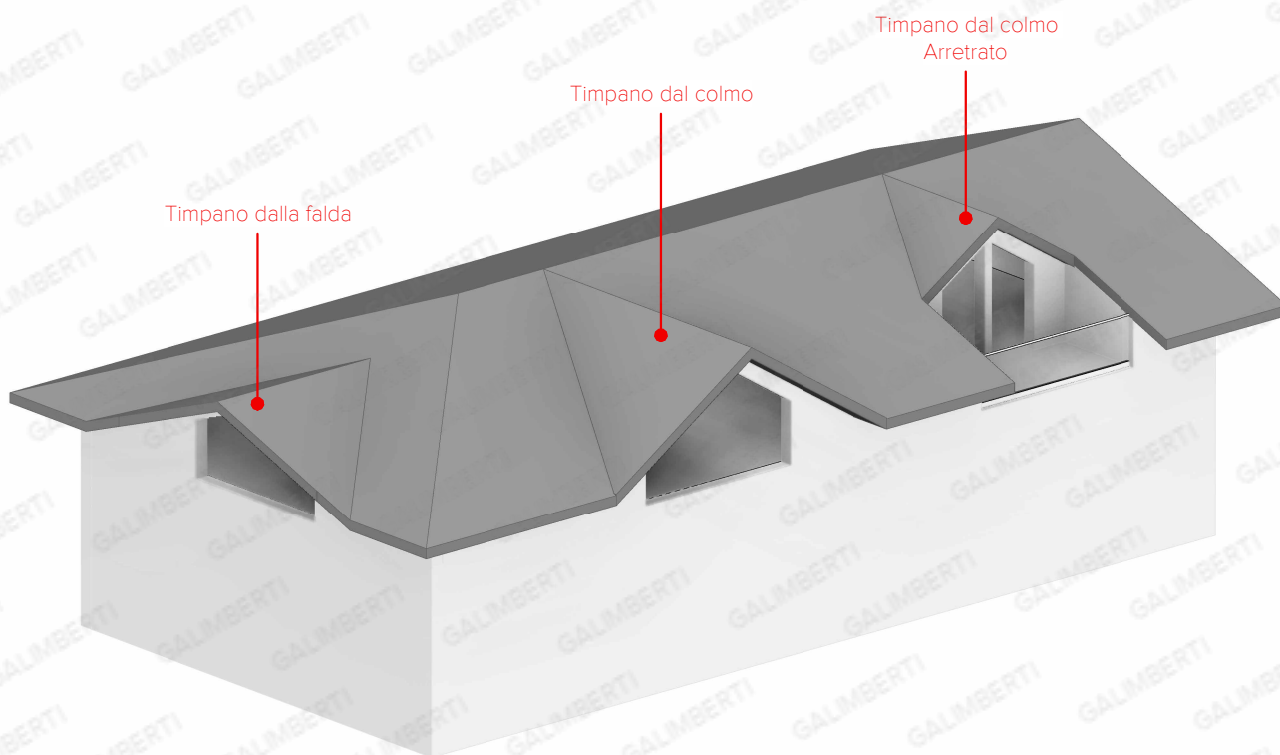


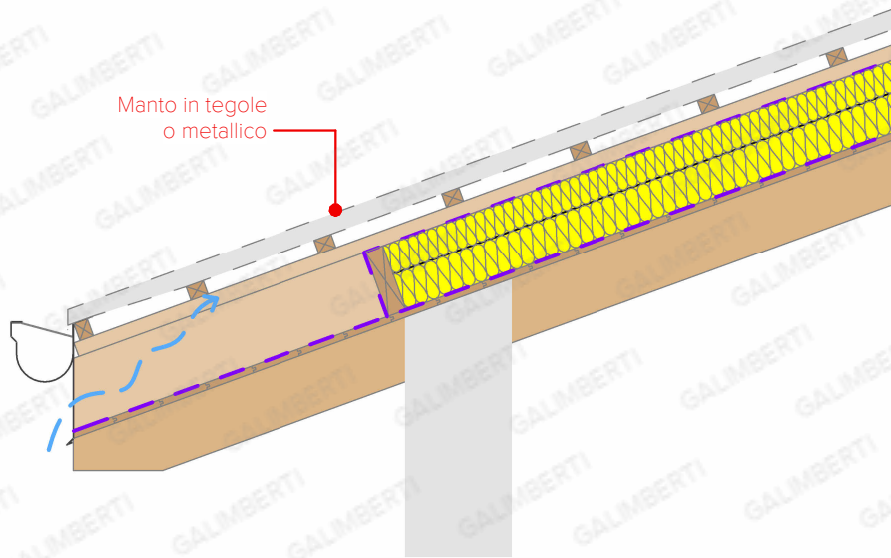
03 - Alla francese



04 - Falda su cordolo

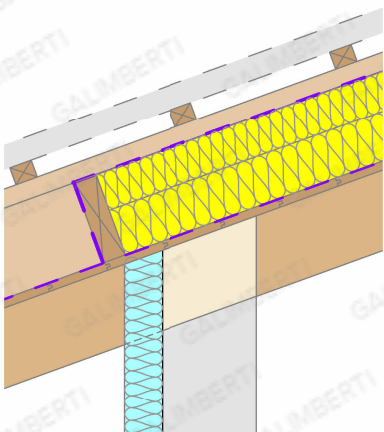




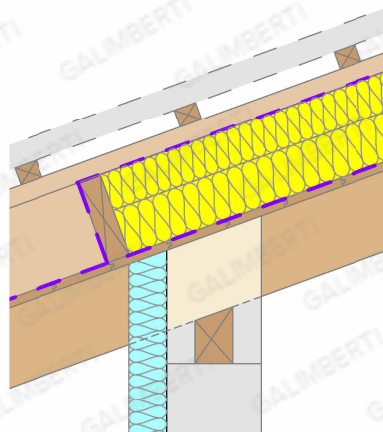


Manto in tegole
o metallico

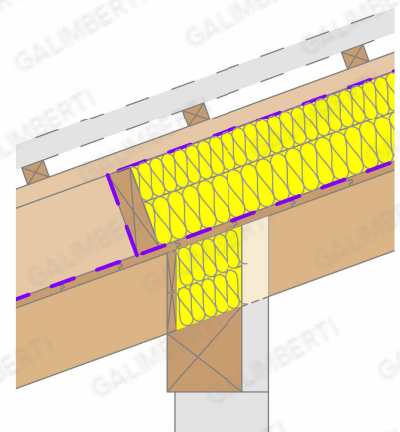
Nodo tipo



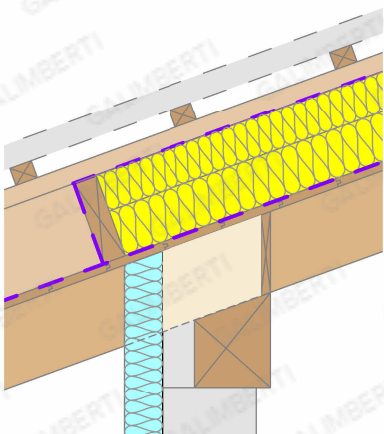
TE.100 - Travetto annegato nella correa



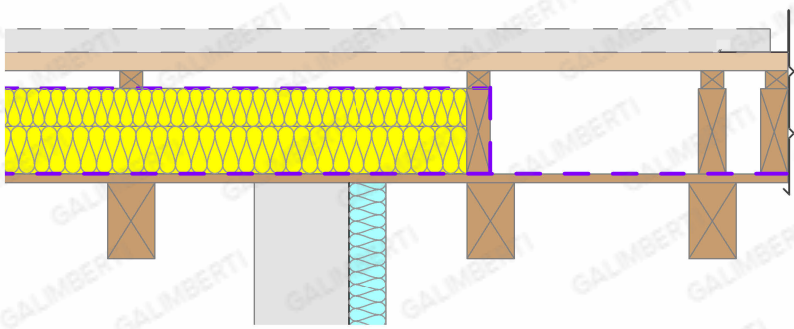
TE.101 - Radice di appoggio
Appoggio continuo



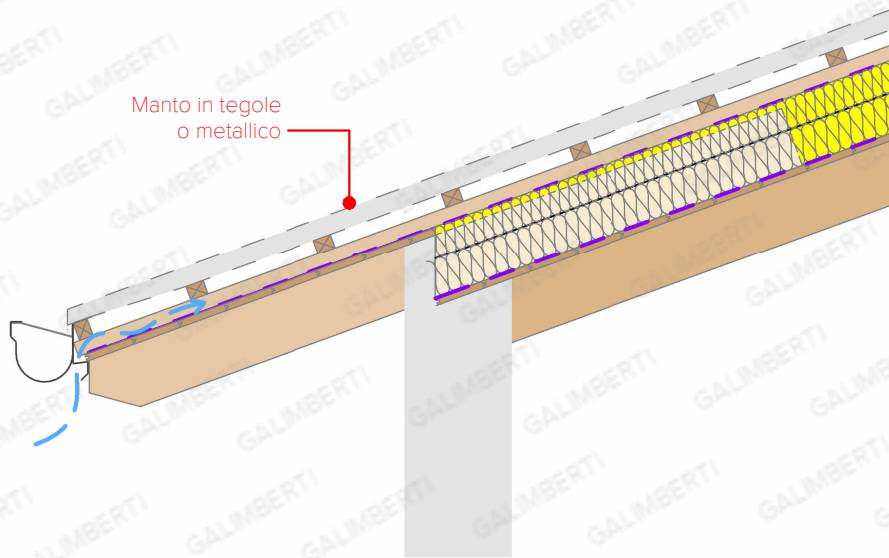
TE.102 - Correa esterna
Appoggio su pilastro



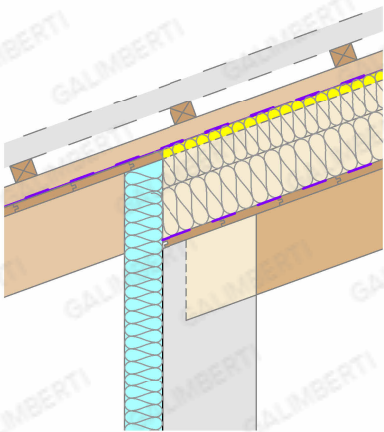
TE.103 - Correa interna
Appoggio su pilastro



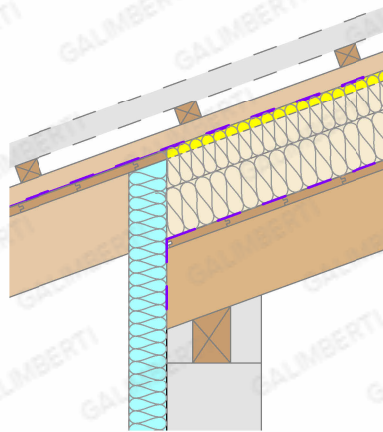
TE.150 - Sezione longitudinale



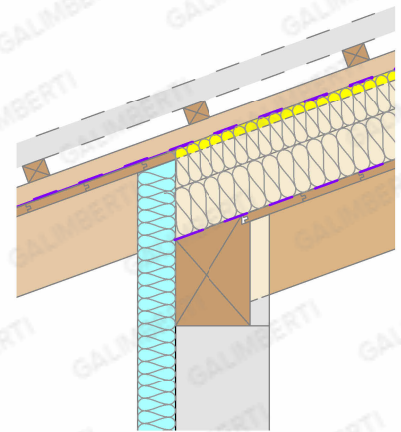
Nodo tipo



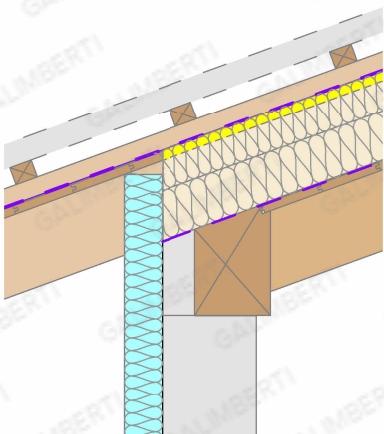
TE.200 - Travetto annegato nella correa



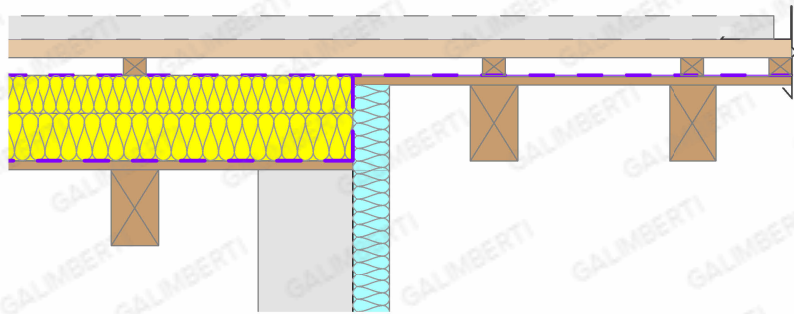
TE.201 - Radice di appoggio
Appoggio continuo



TE.202 - Correa non a vista
Appoggio su pilastro

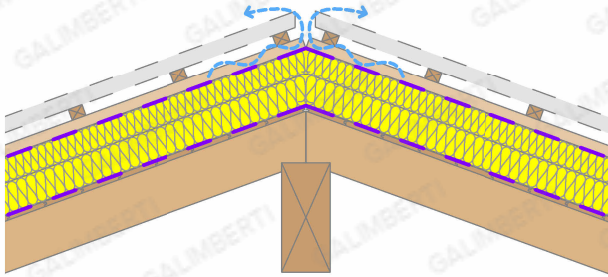


TE.203 - Correa interna
Appoggio su pilastro



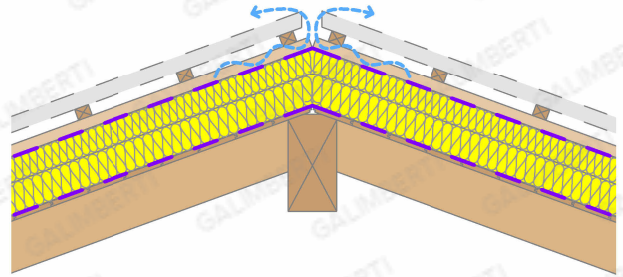
TE.205 - Sezione longitudinale

Travetti in appoggio

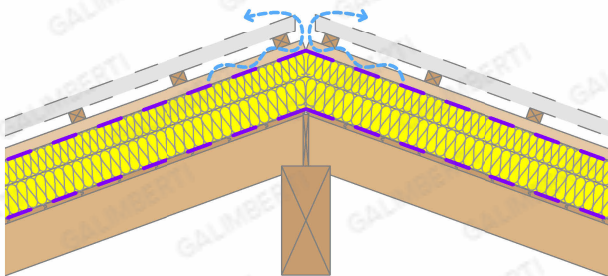


TE.300 - Senza tavoletta

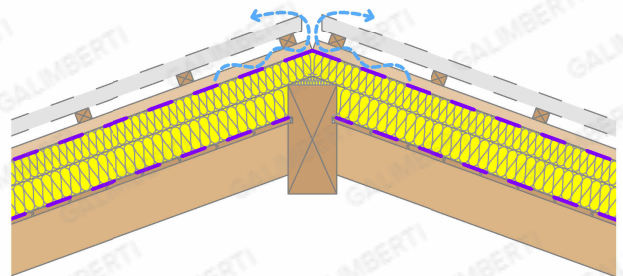
Travetti sul fianco



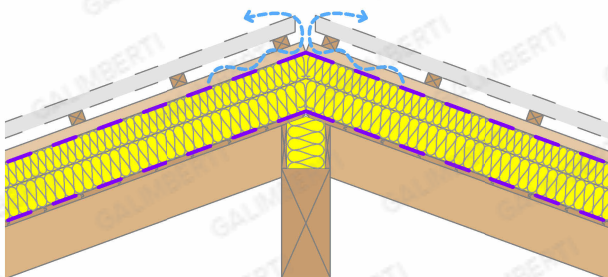
TE.330 - Travetti sul fianco



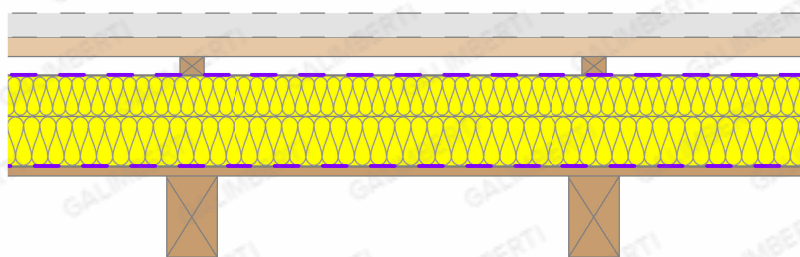
TE.301 - Tavoletta singola



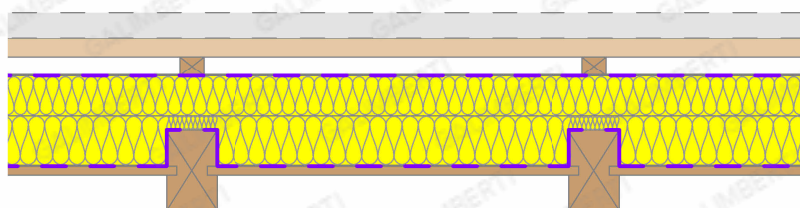
TE.331 - Colmo incassato



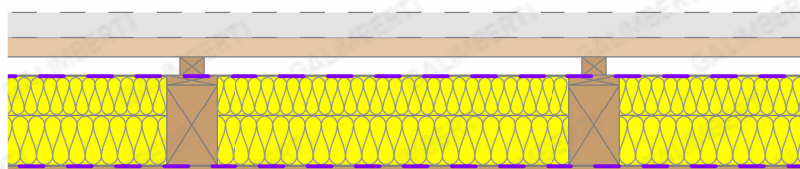
TE.302 - Tavoletta doppia



IS01 - Isolante sopra travetti

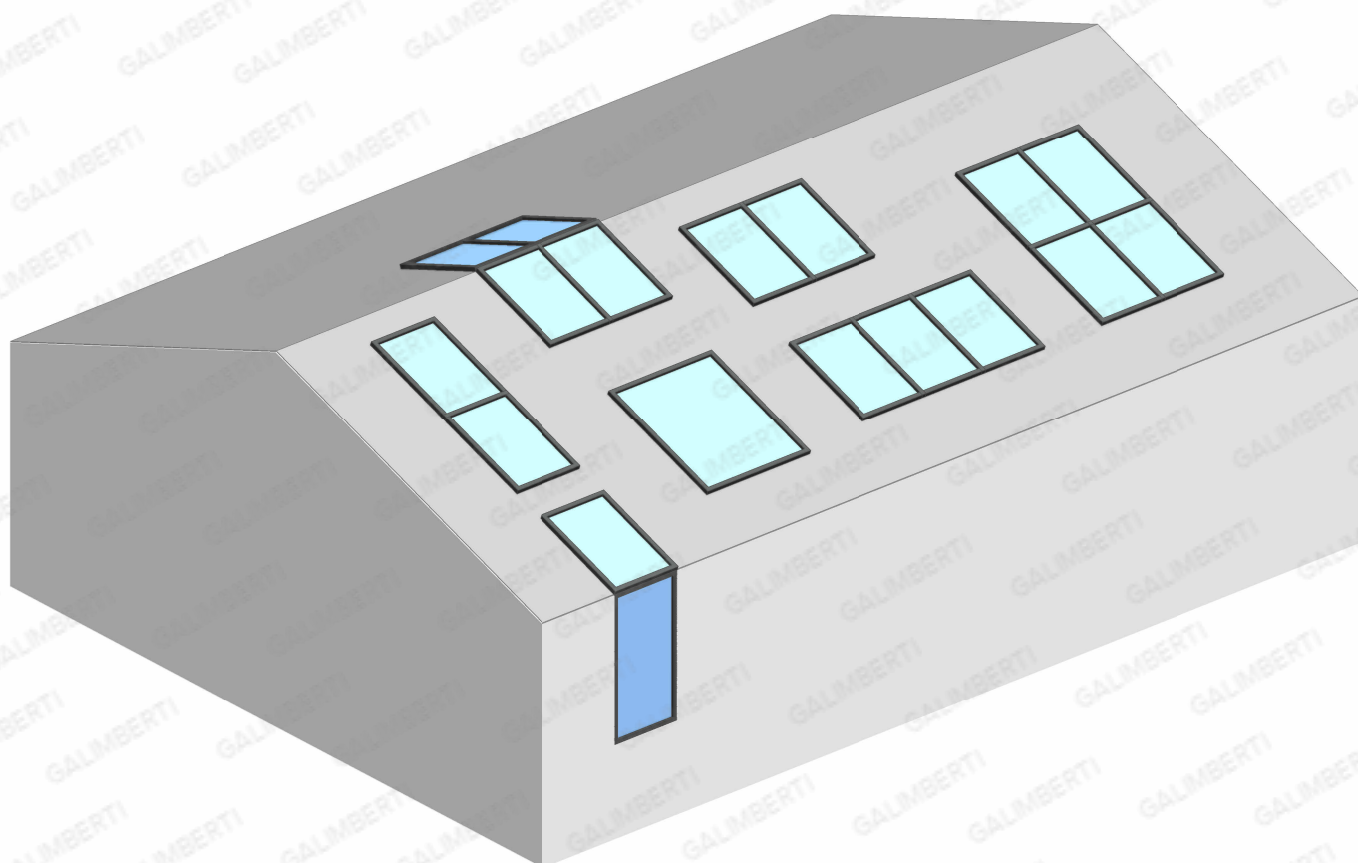
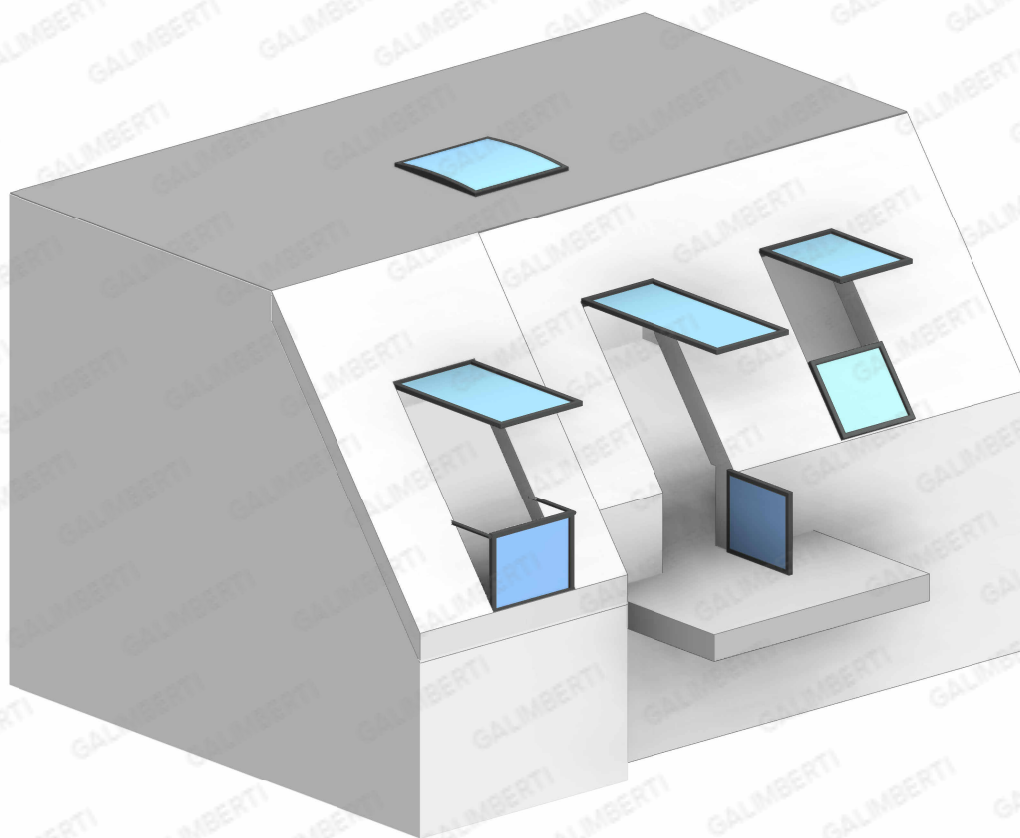


IS02 - Isolante parzialmente incassato

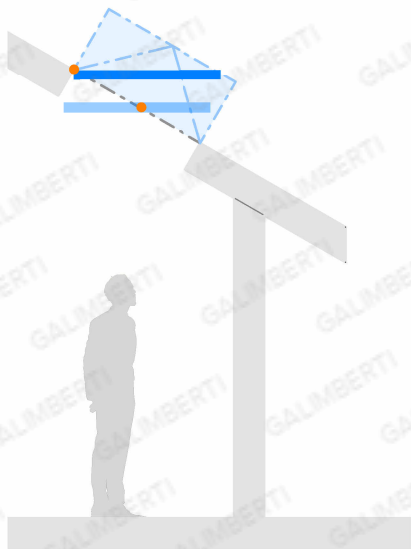


IS03 - Isolante incassato

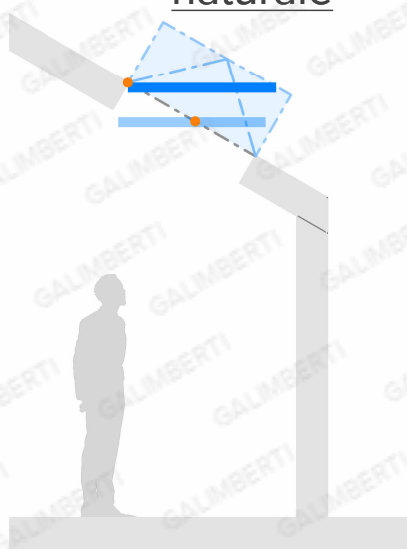
falde / luce
naturale



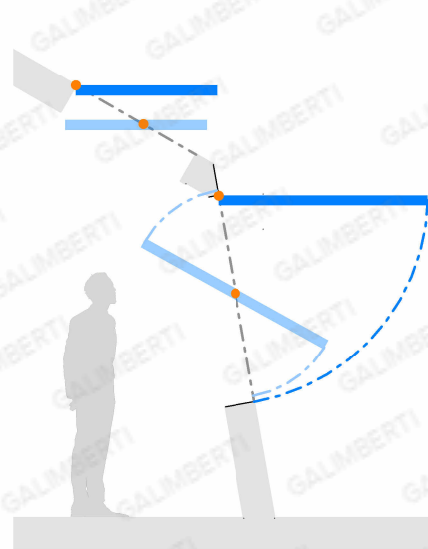
falde / luce
naturale



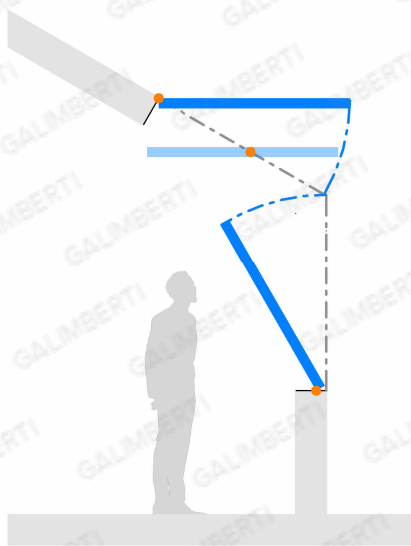
01 - Con aggetto
Finestra semplice



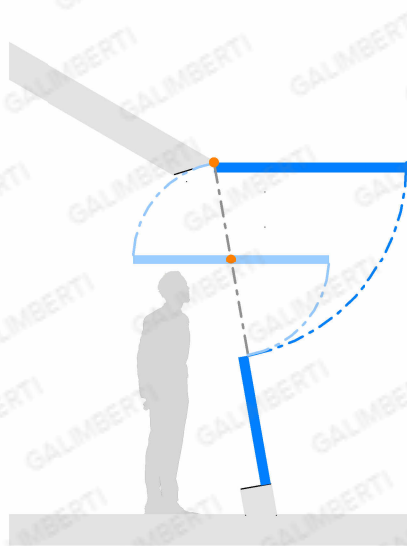
02 - Senza aggetto
Finestra semplice



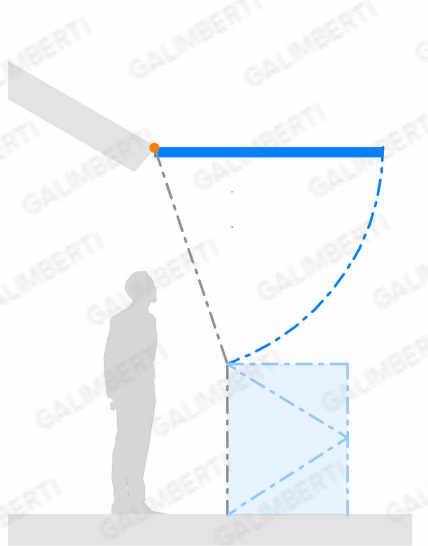
03 - Alla francese
Finestra semplice + Vasistas



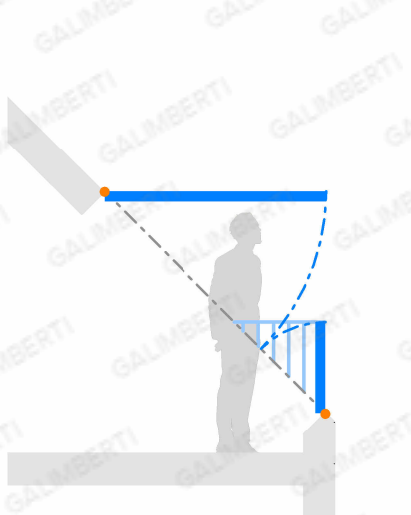
04 - Senza aggetto
Continuità tetto-parete



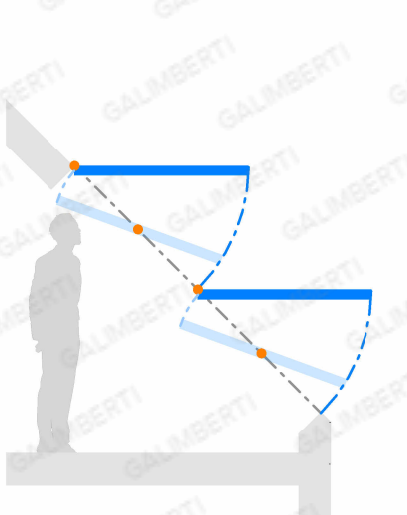
05 - Alla francese
Sottofinestra fisso



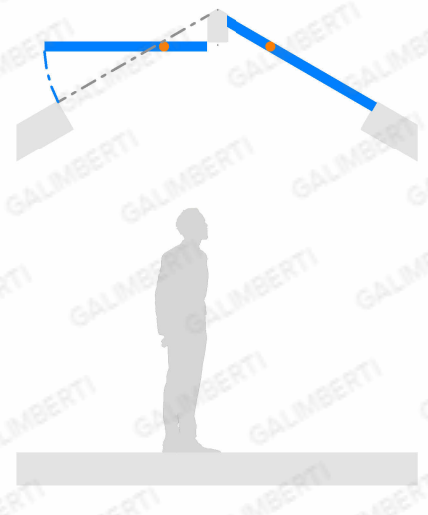
06 - Alla francese su muro verticale
Accesso su esterno



07 - Falda su cordolo
Balcone



08 - Falda su cordolo
Doppia verticale



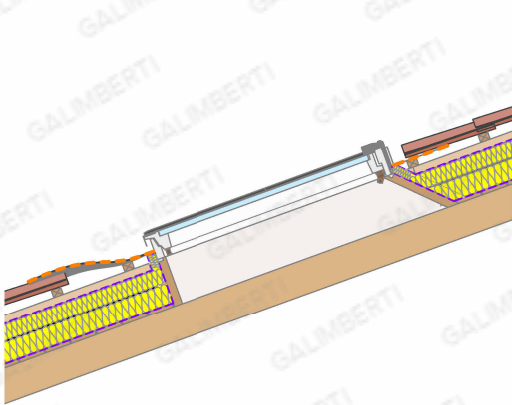
09 - Colmo
Finestra al colmo



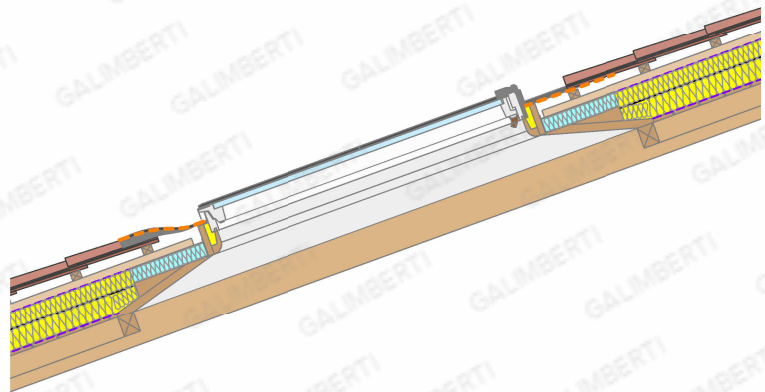
*FT.100 - finestra a una apertura

*FT.200 - finestra a due aperture

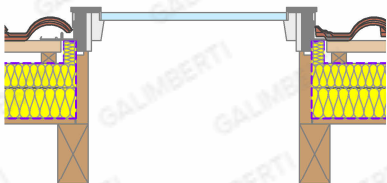
*FT.300 - finestra a quattro aperture



*FT.100 e *FT.200
sezione longitudinale



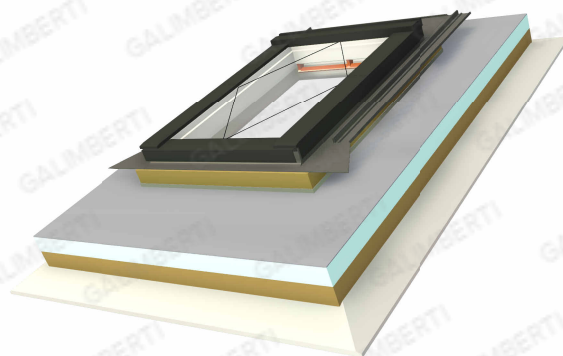
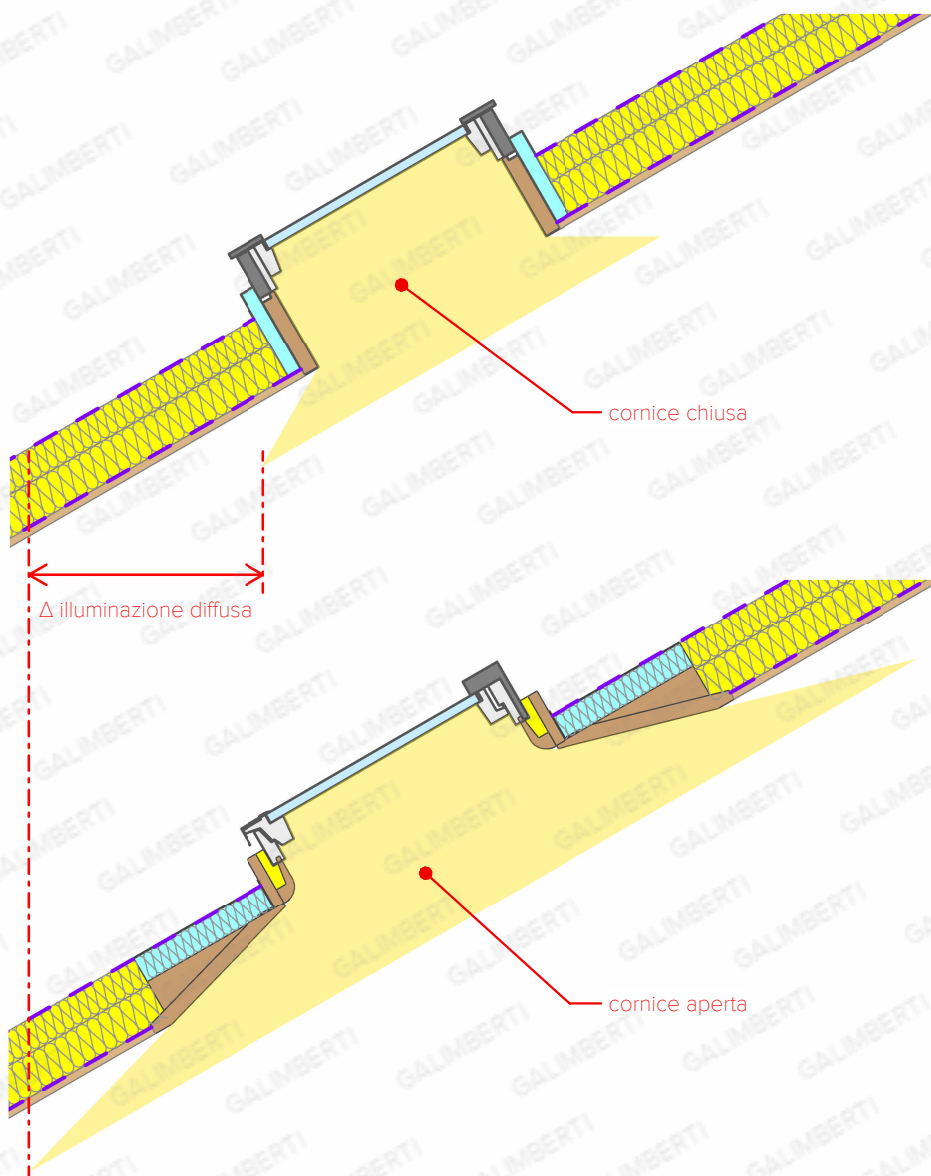
*FT.200 e *FT.300
sezione longitudinale



*FT.100 e *FT.200
sezione trasversale



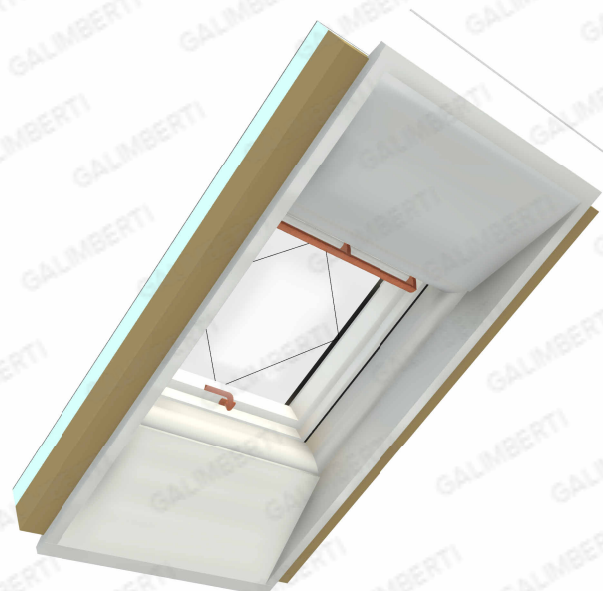
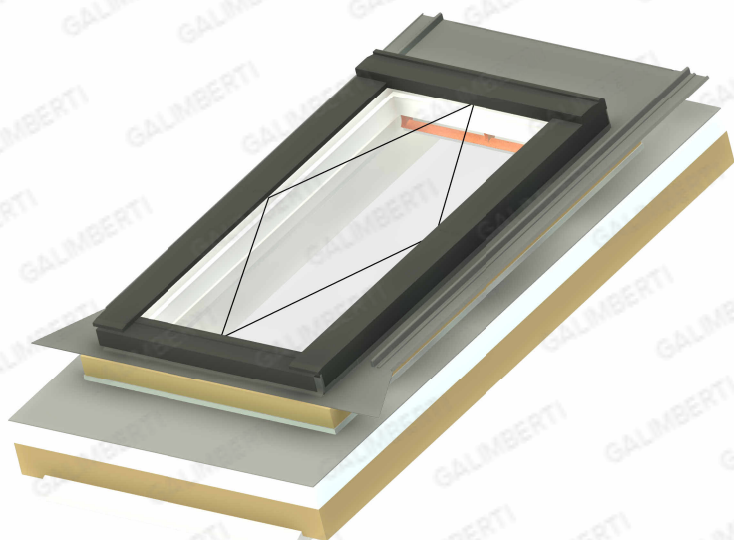
*FT.300
sezione trasversale



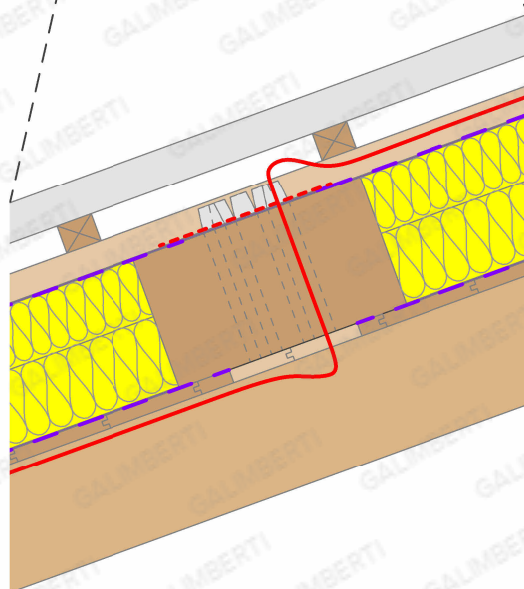
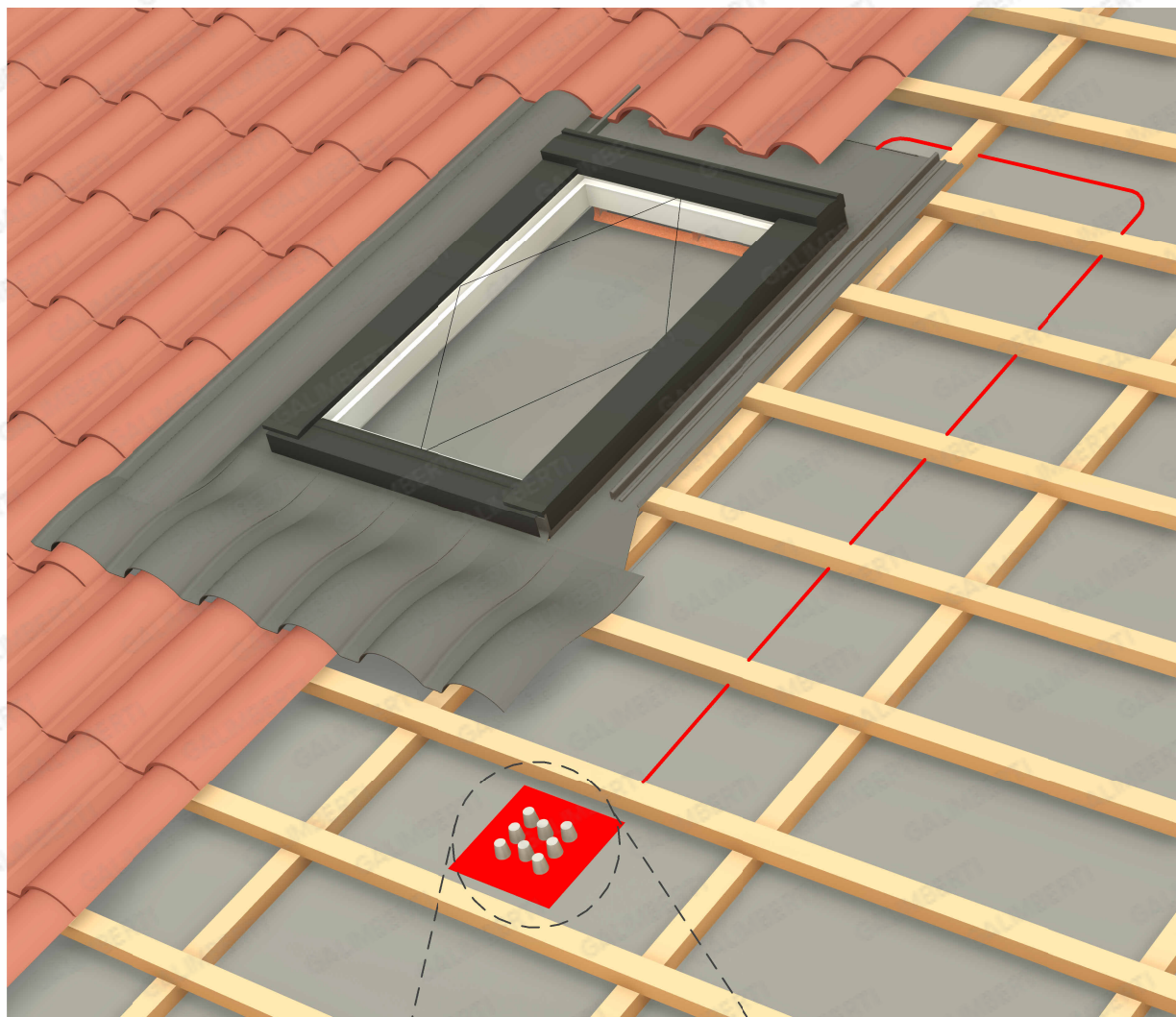
*FT.300 - Finestra a quattro aperture



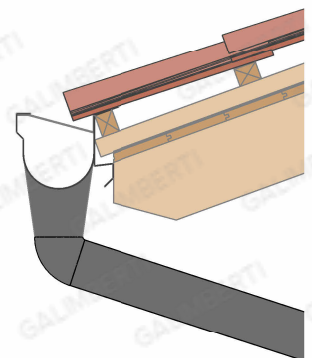
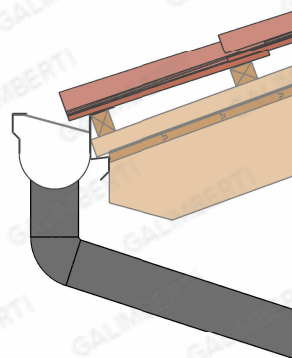
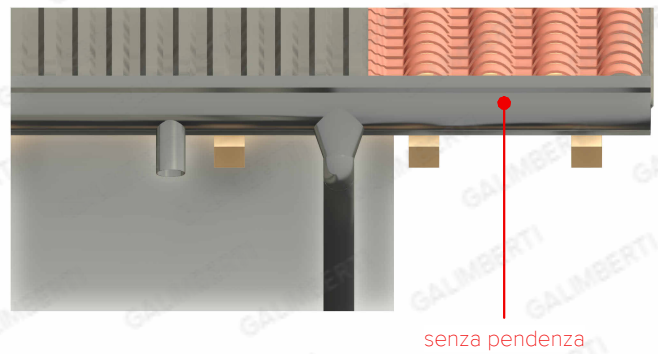
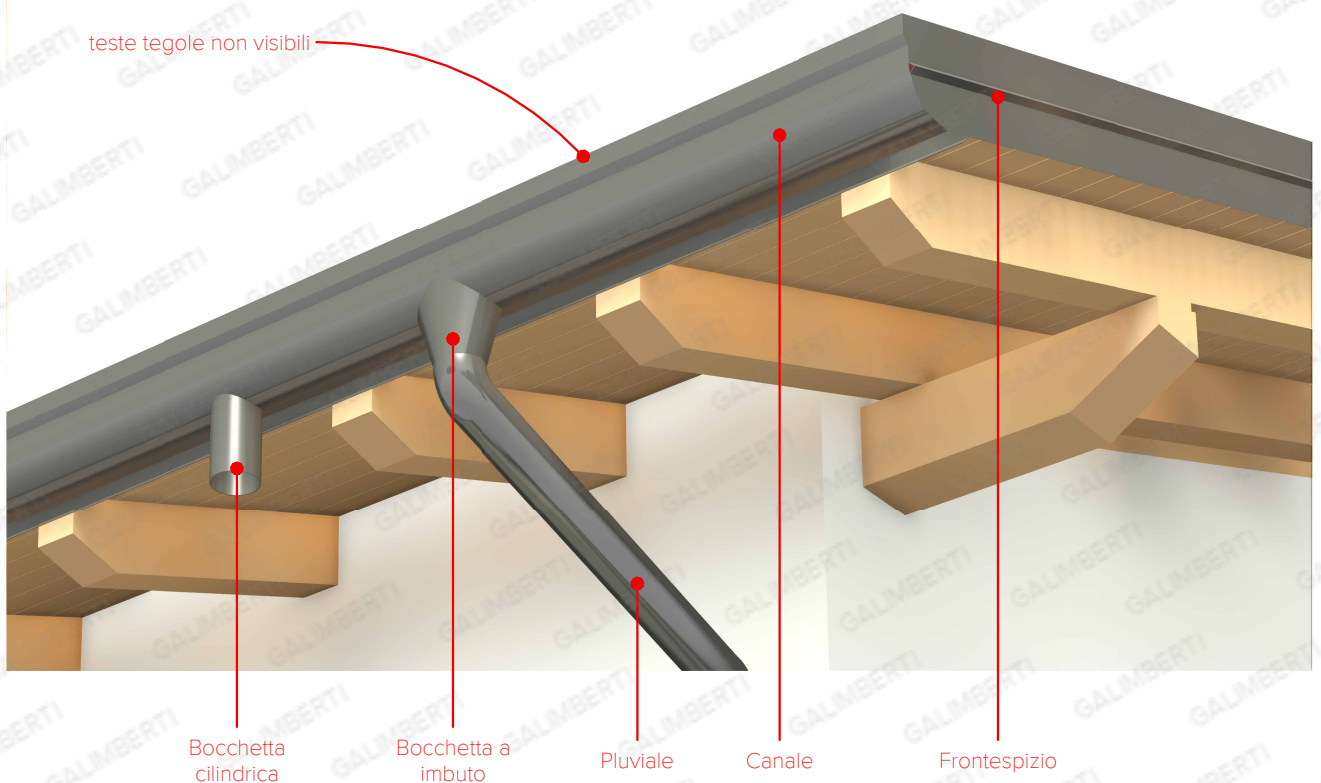
*FT.100 - finestra ad una apertura

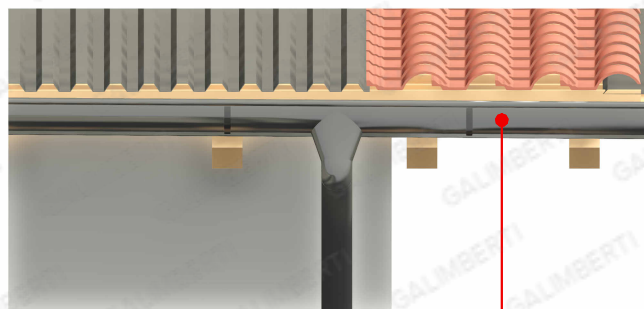
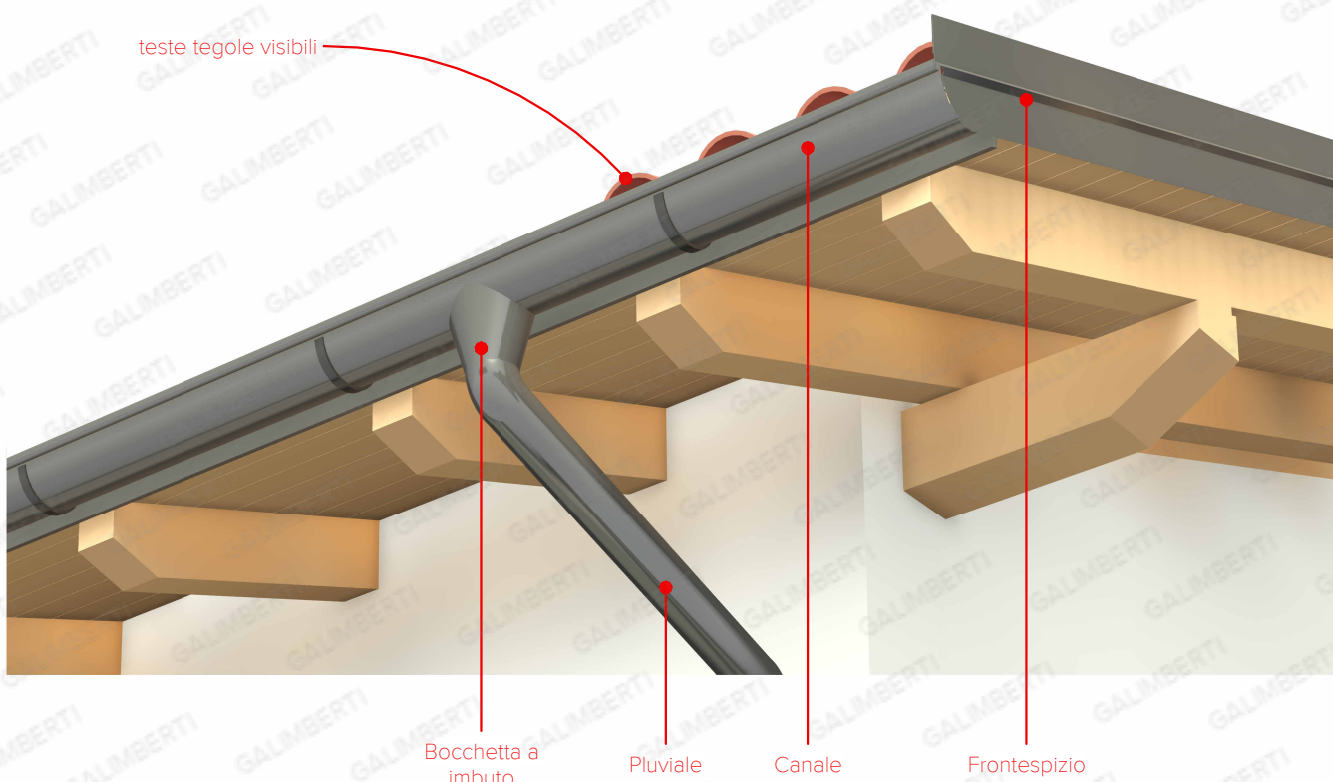


*FT.200 - finestra a due aperture

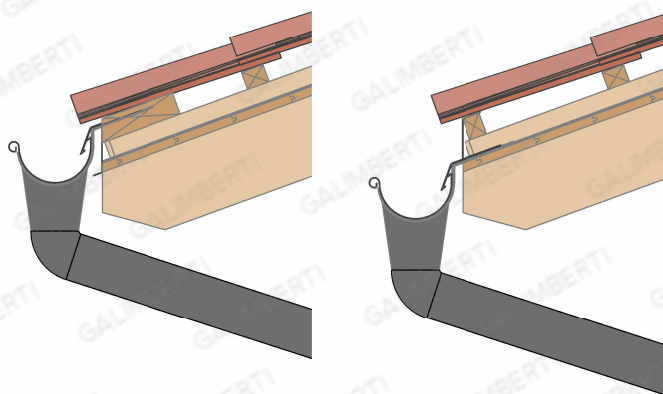


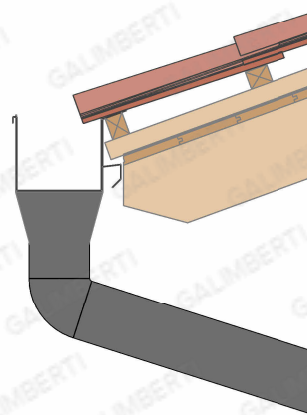
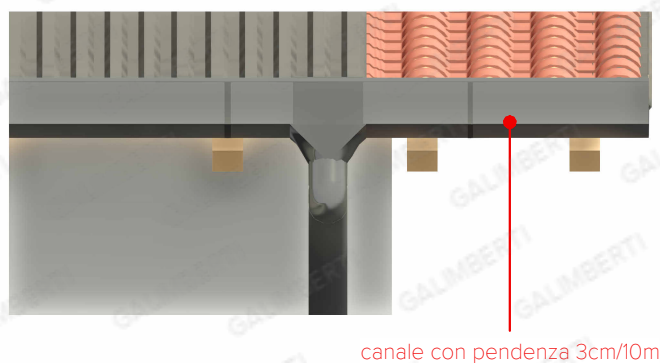
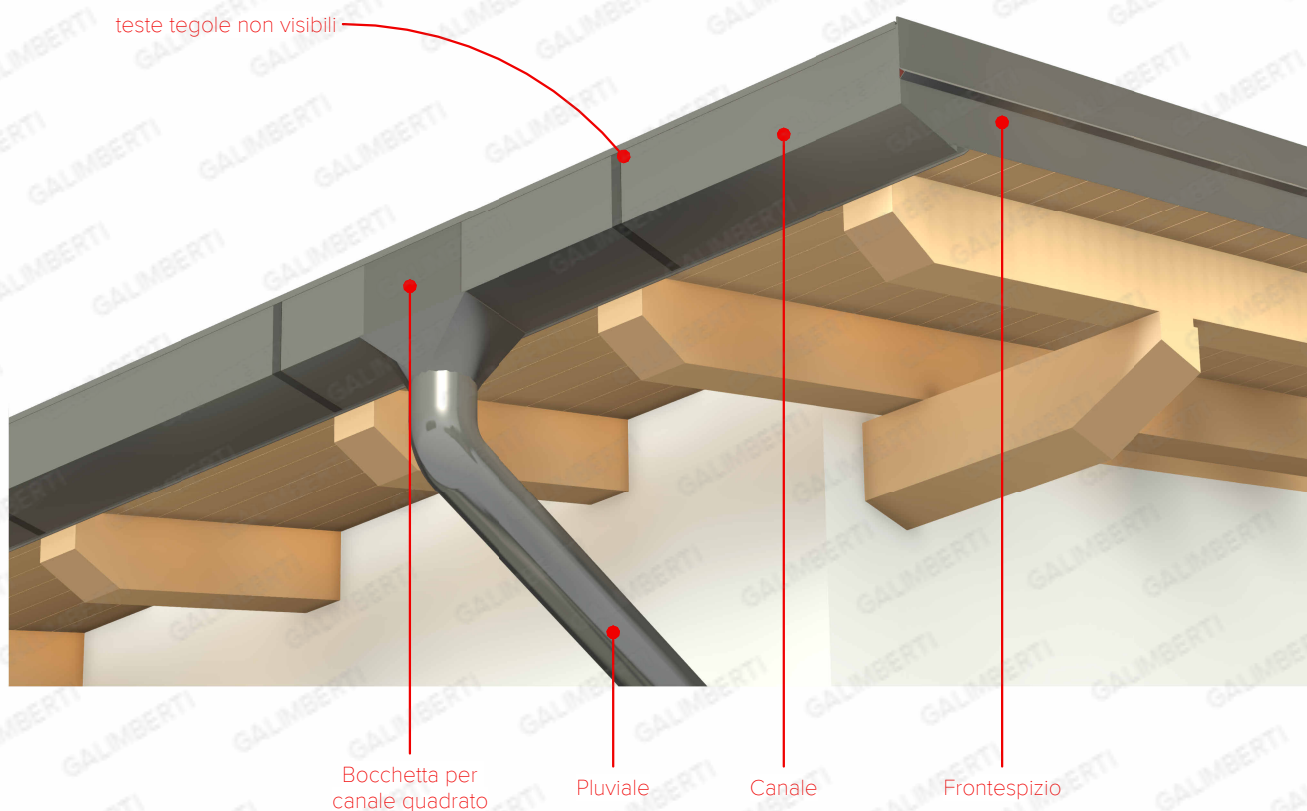
*PE.400 - Passaggio elettrico



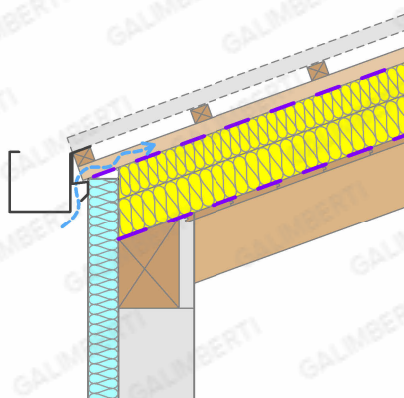
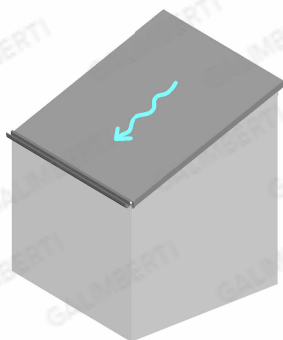


canale con pendenza 3cm/10m

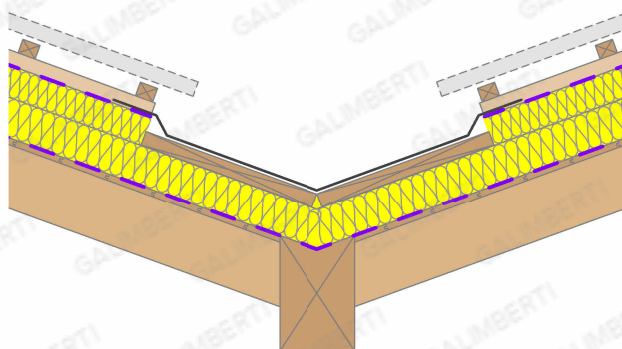
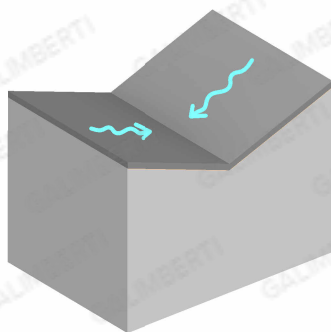




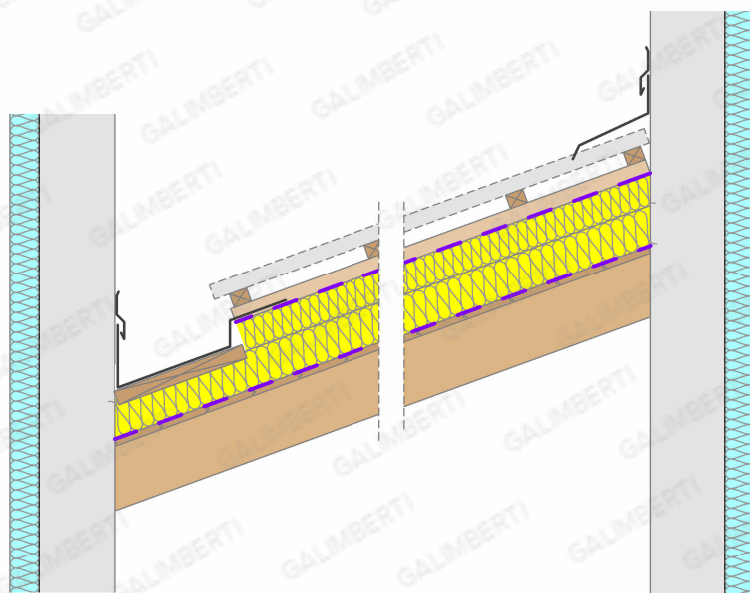
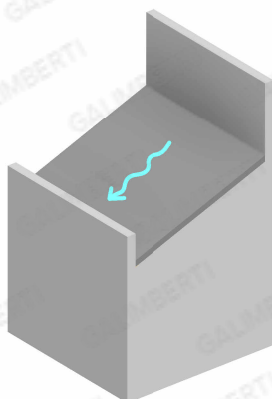
falde / smaltimento acque



01 - Gronda a filo

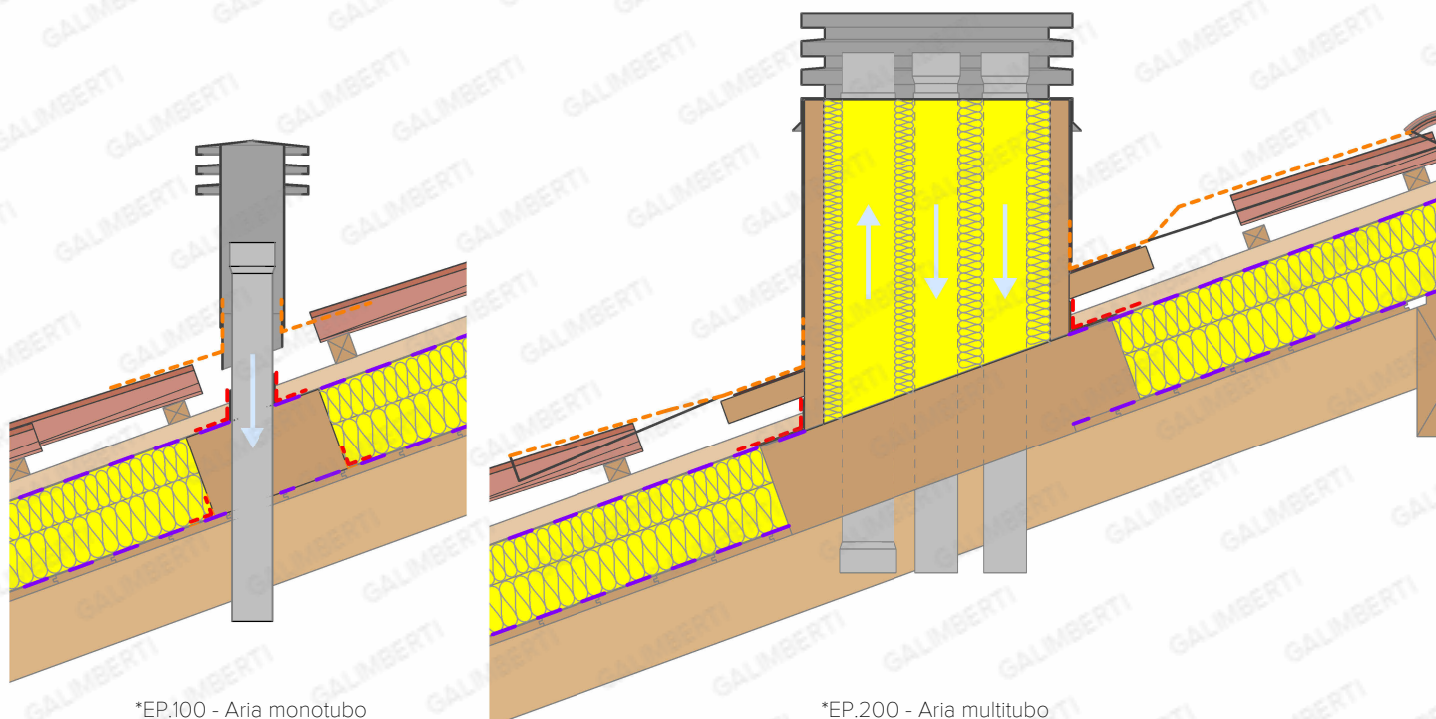


02 - Converse in EPDM



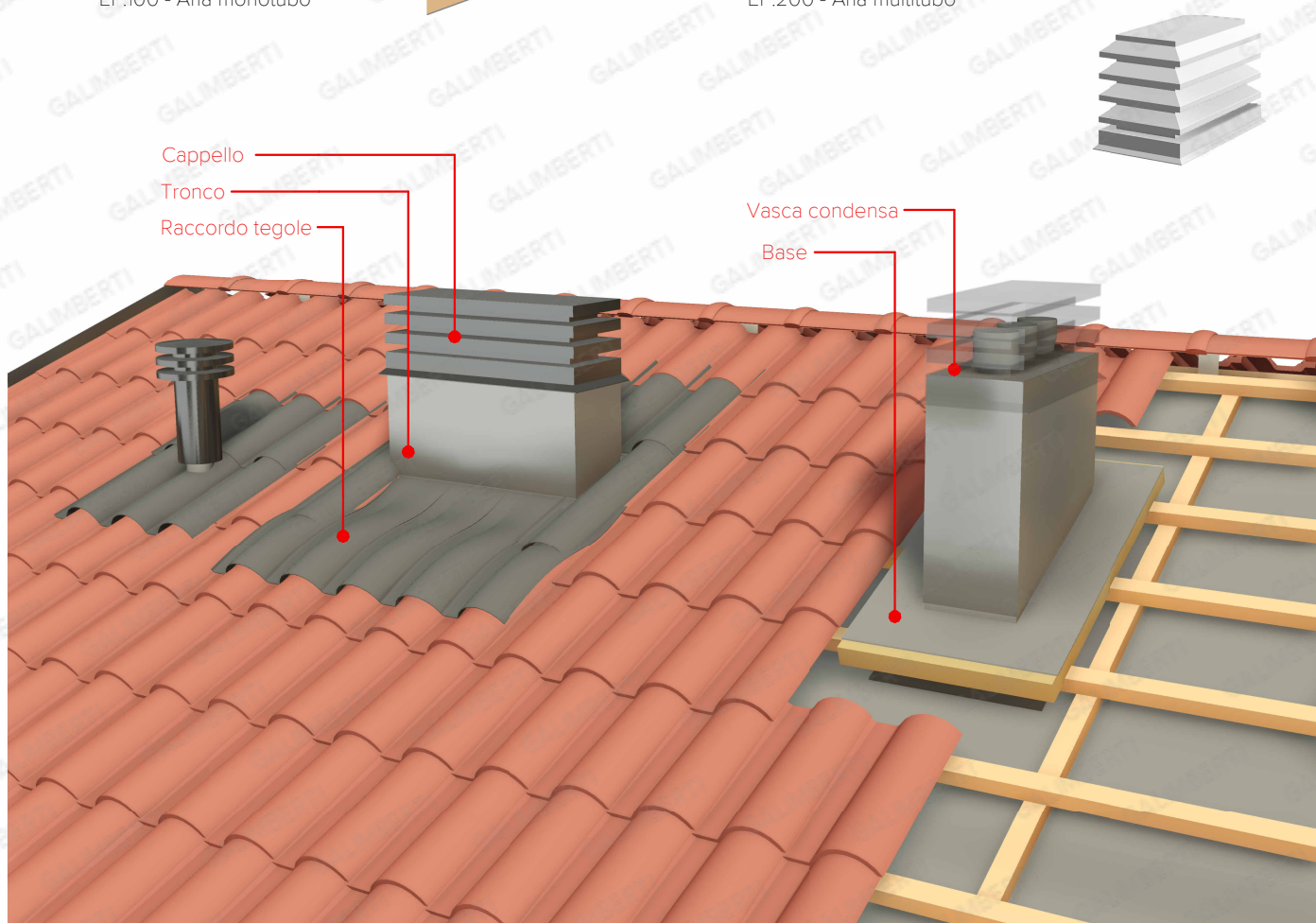
03 - Contromuro basso

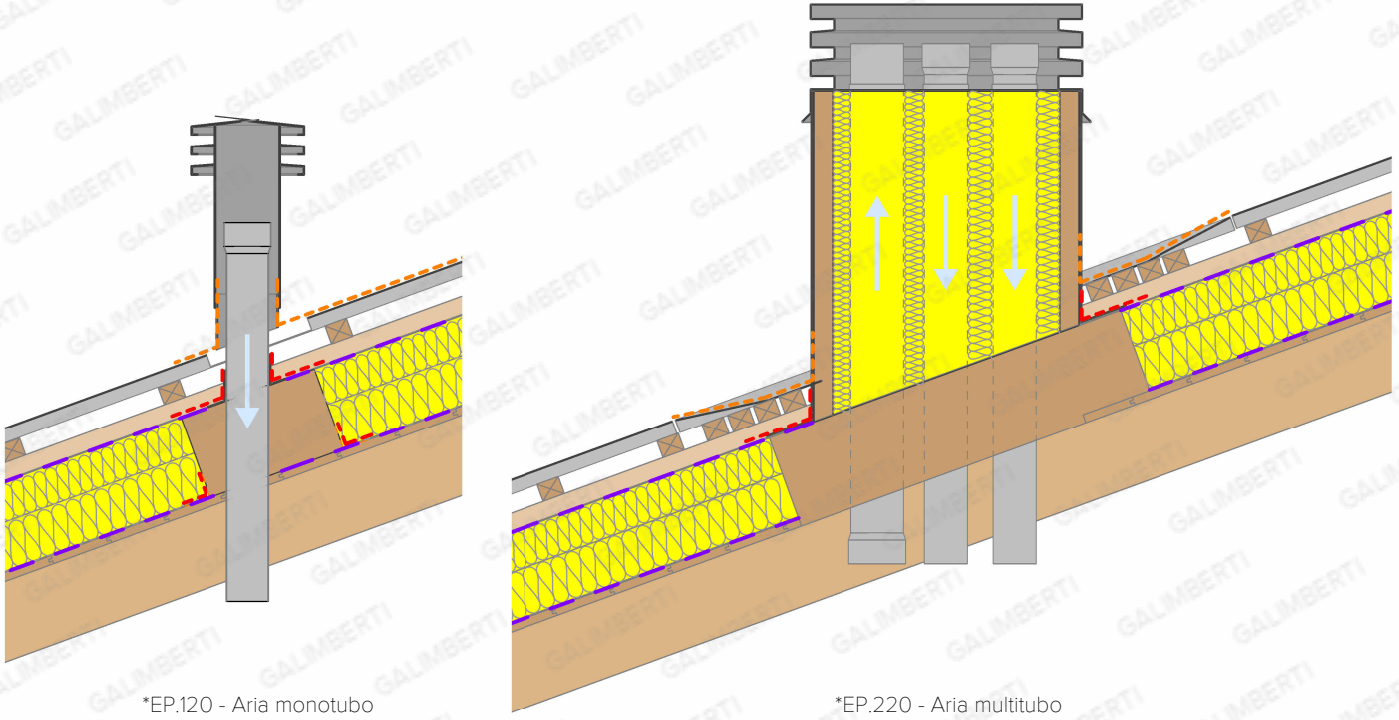
04 - Contromuro alto



*EP.100 - Aria monotubo

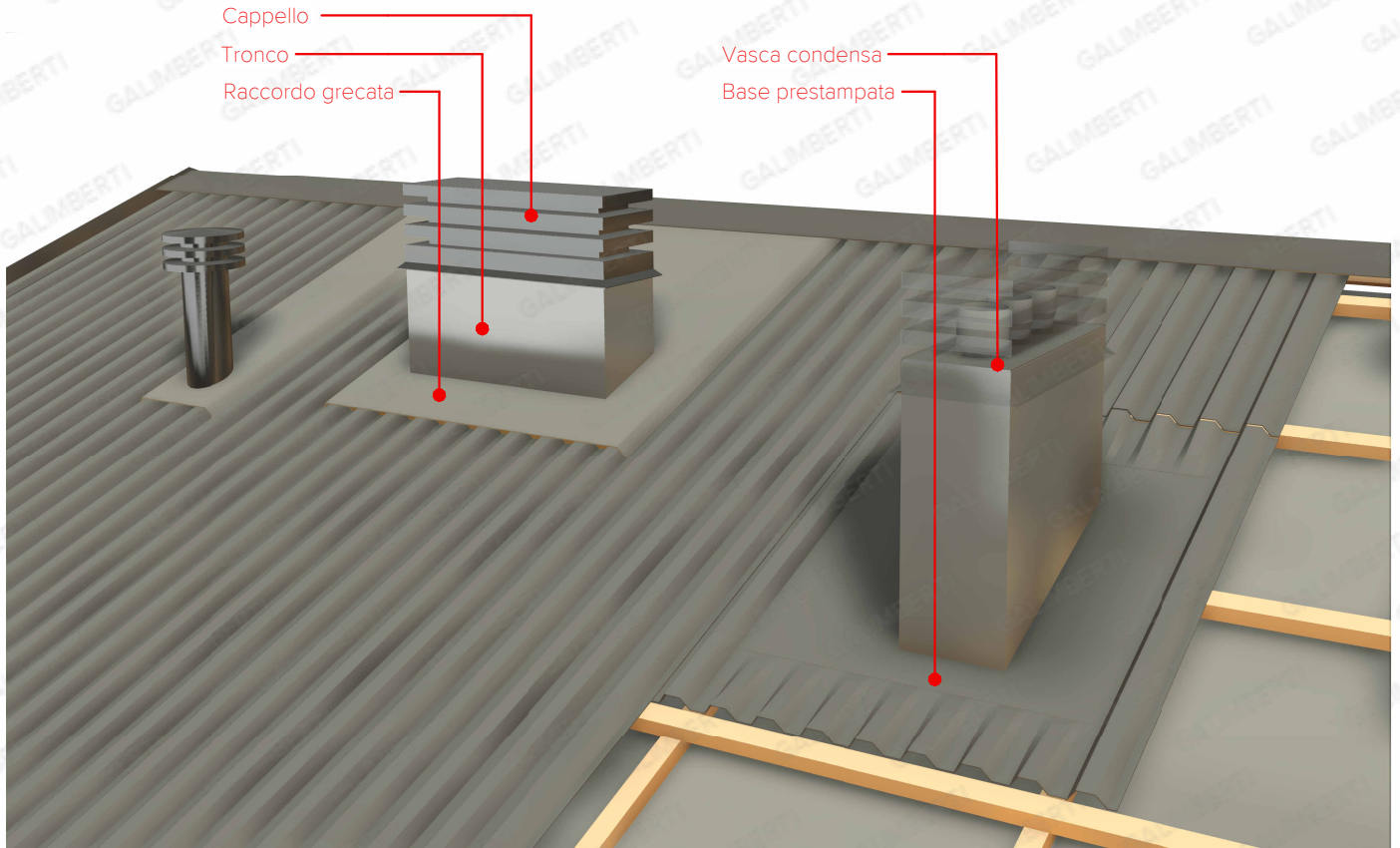
*EP.200 - Aria multitubo

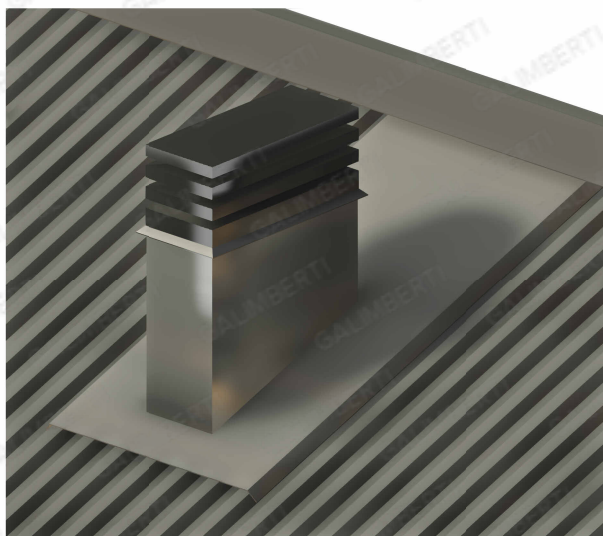




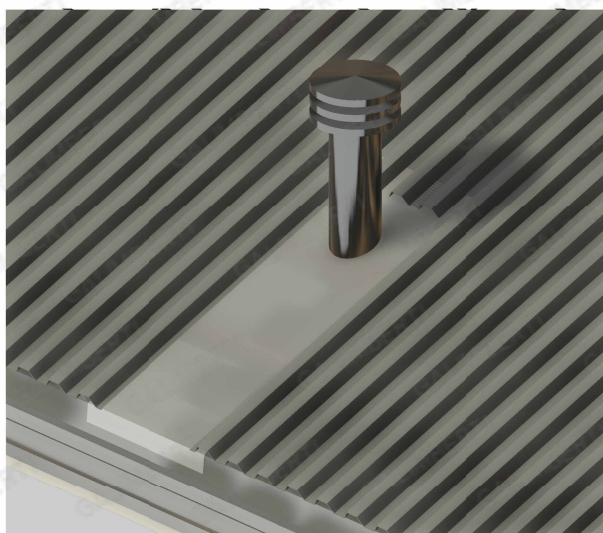
*EP.120 - Aria monotubo

*EP.220 - Aria multitubo





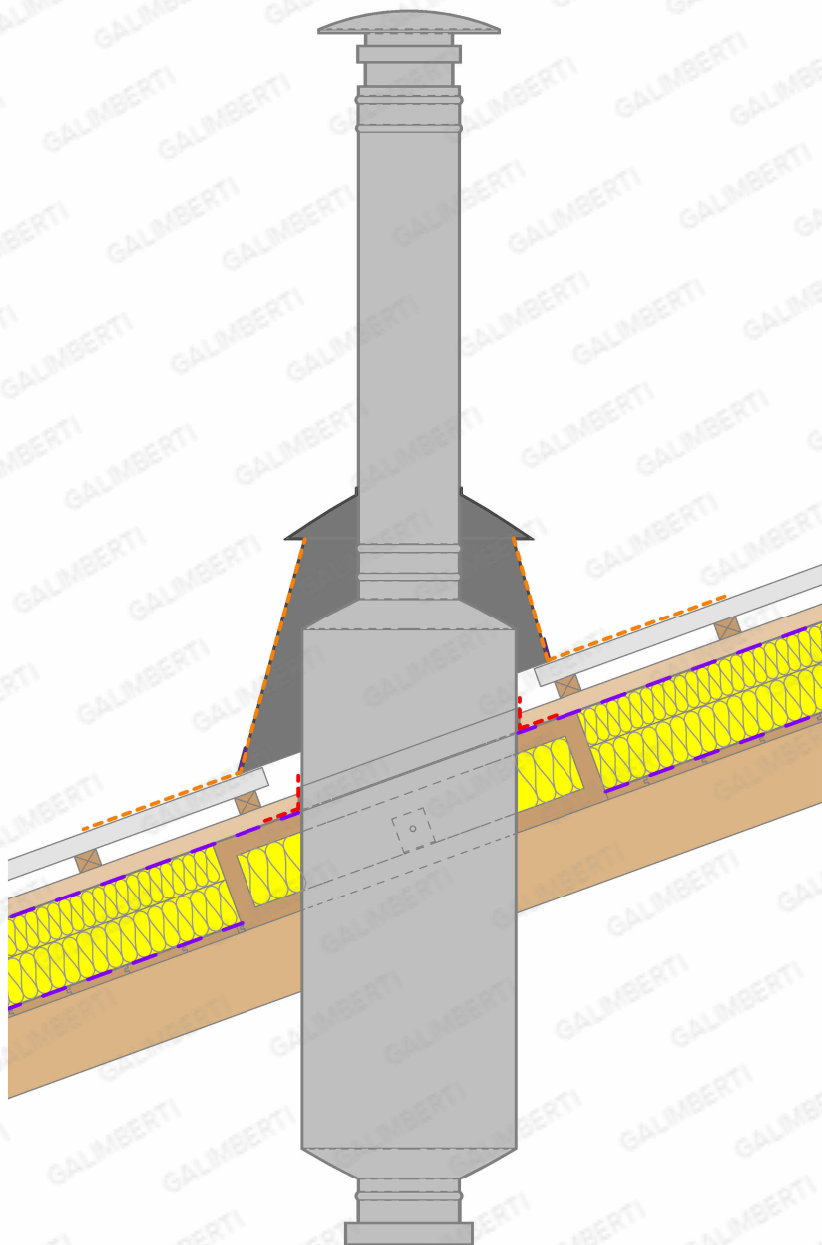
RM.120 - Sella



RM.220 - Canale sotto manto



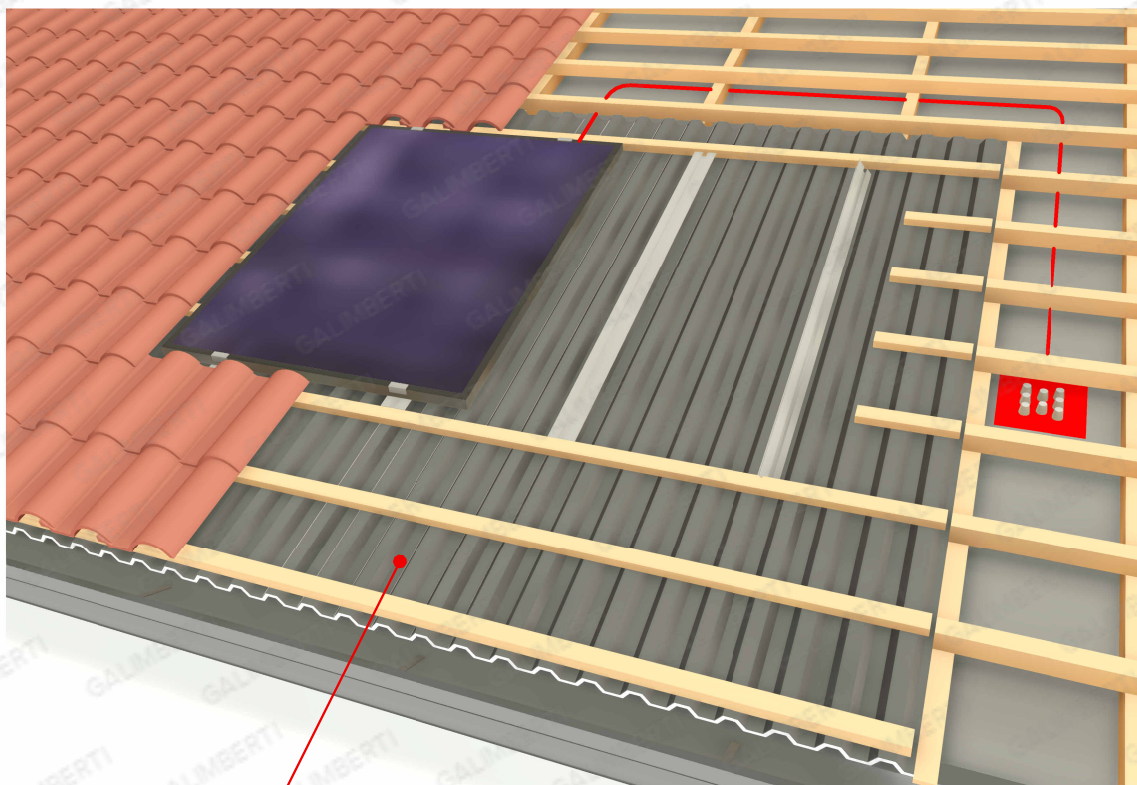
RM.320 - Base prestampata



*EP.300 - Fumi

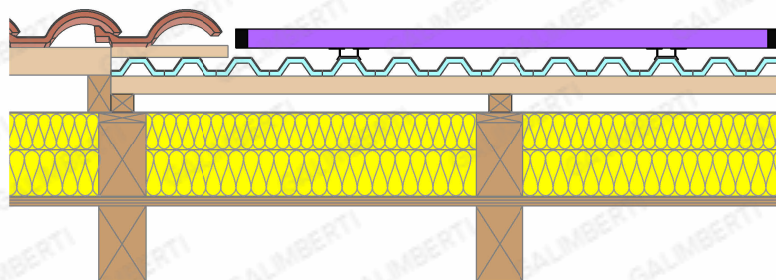
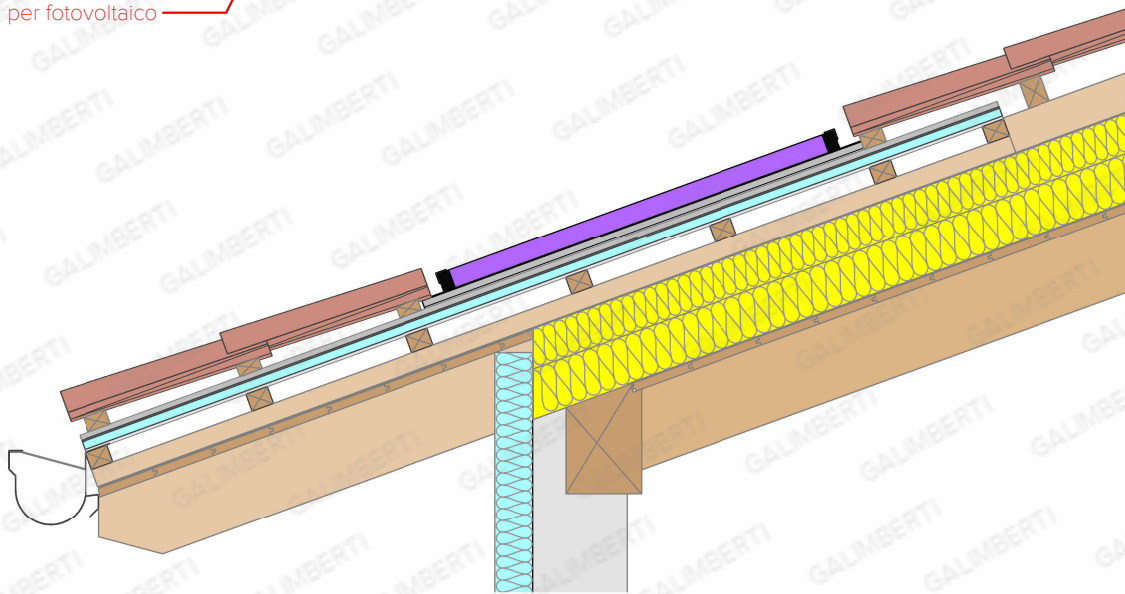


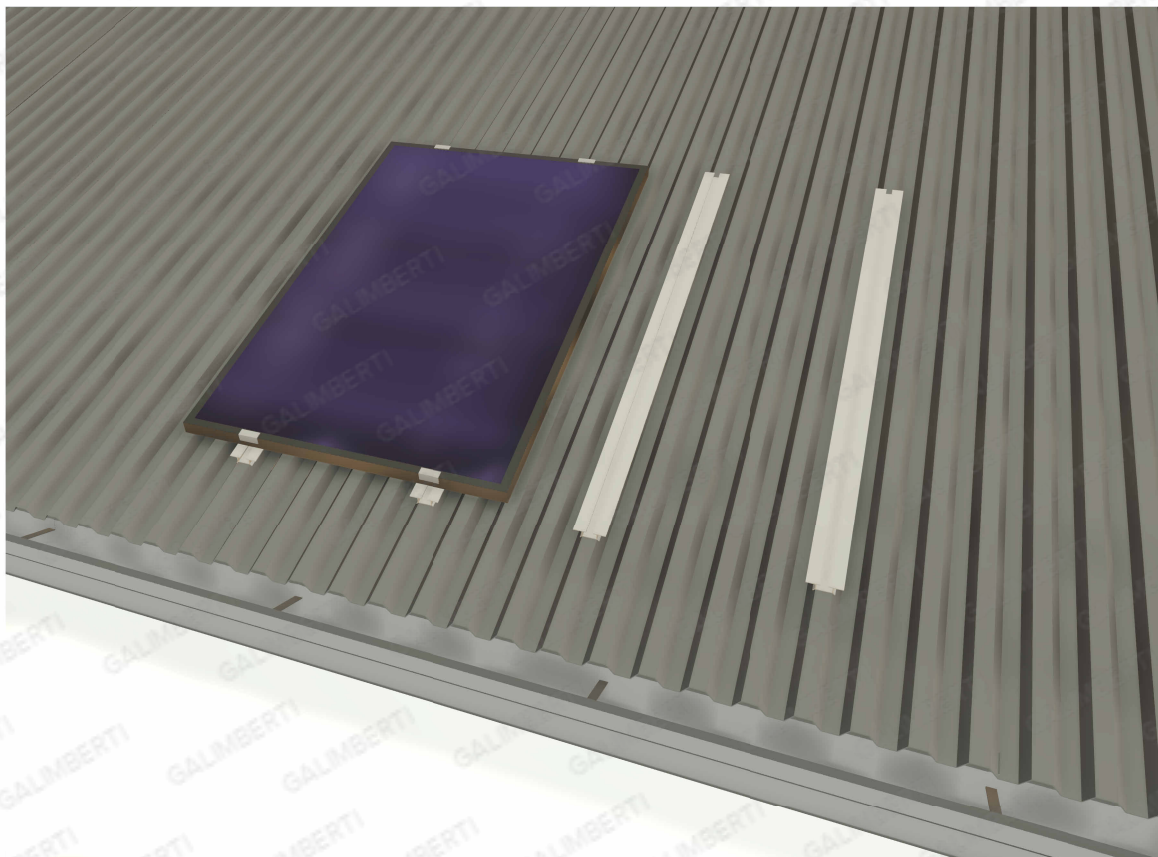
*EP.320 - Fumi



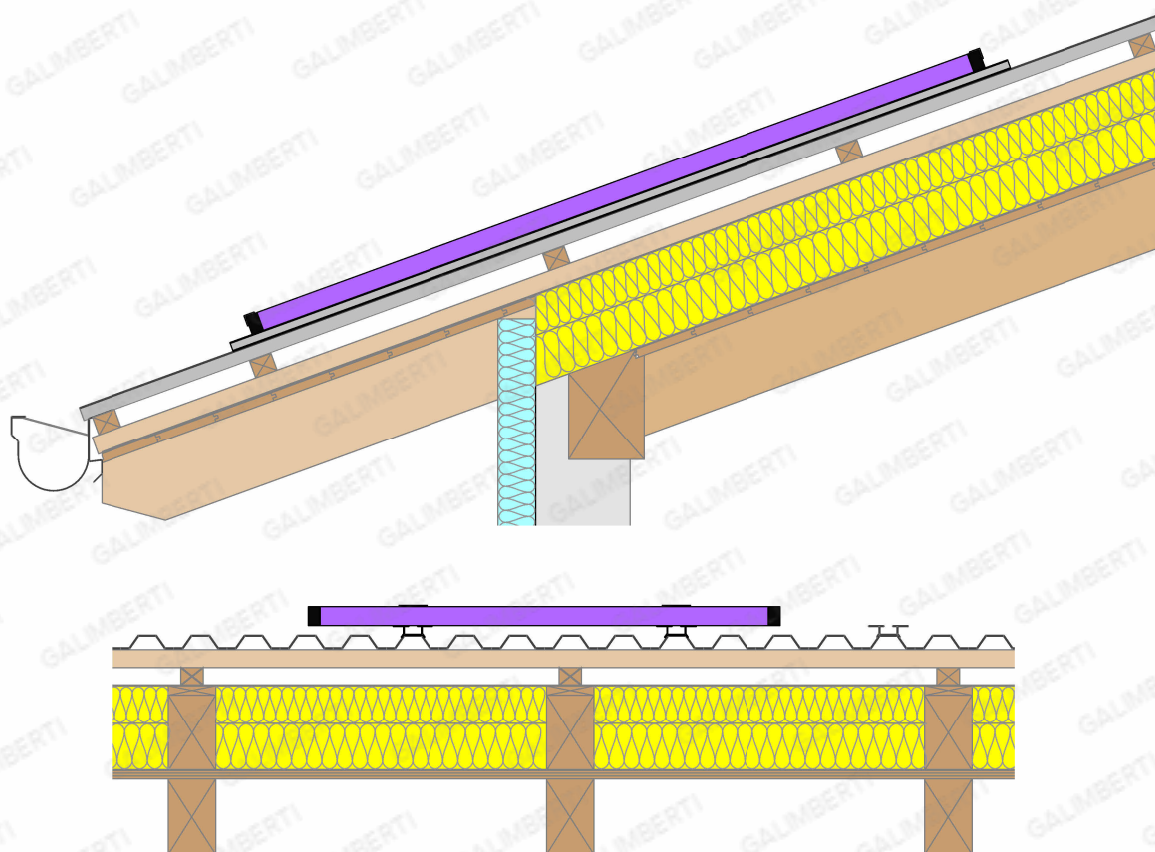
Vasca smaltimento
acque certificata
per fotovoltaico

FV.100 - Pannello fotovoltaico incassato

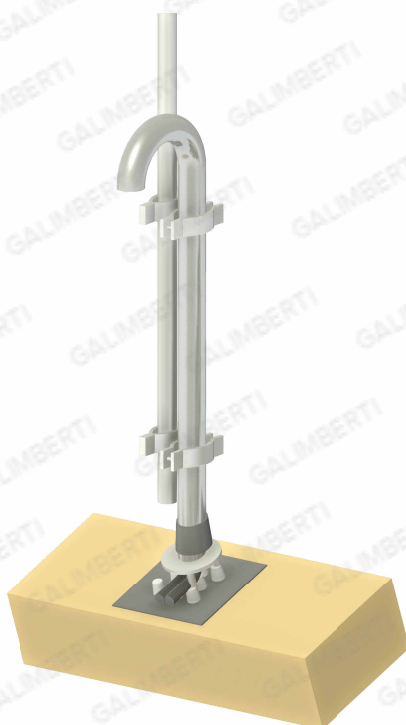
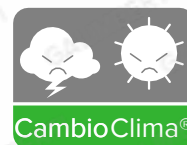




FV.220 - Pannello fotovoltaico



falde / palo
antenna



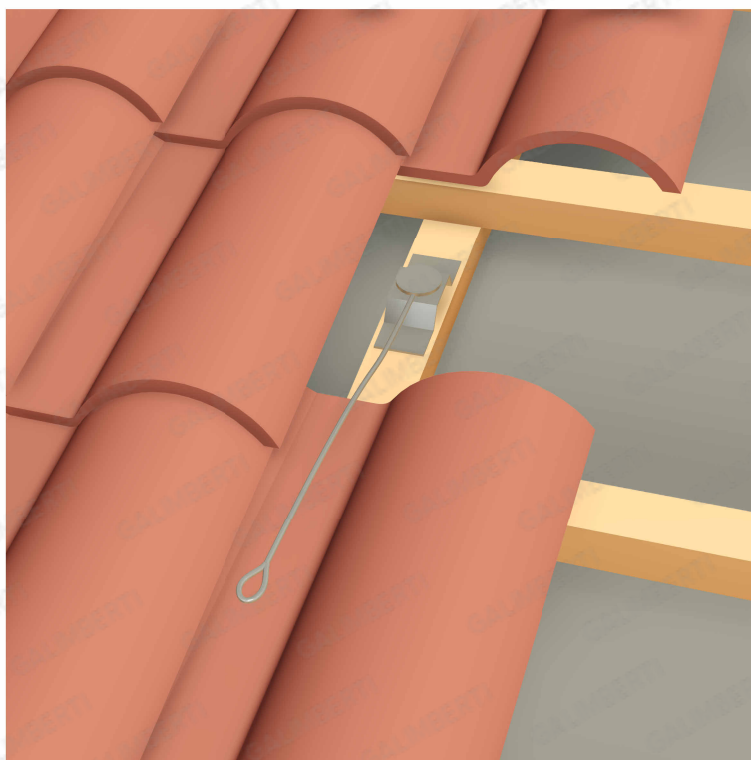
*EP.500 - Palo antenna



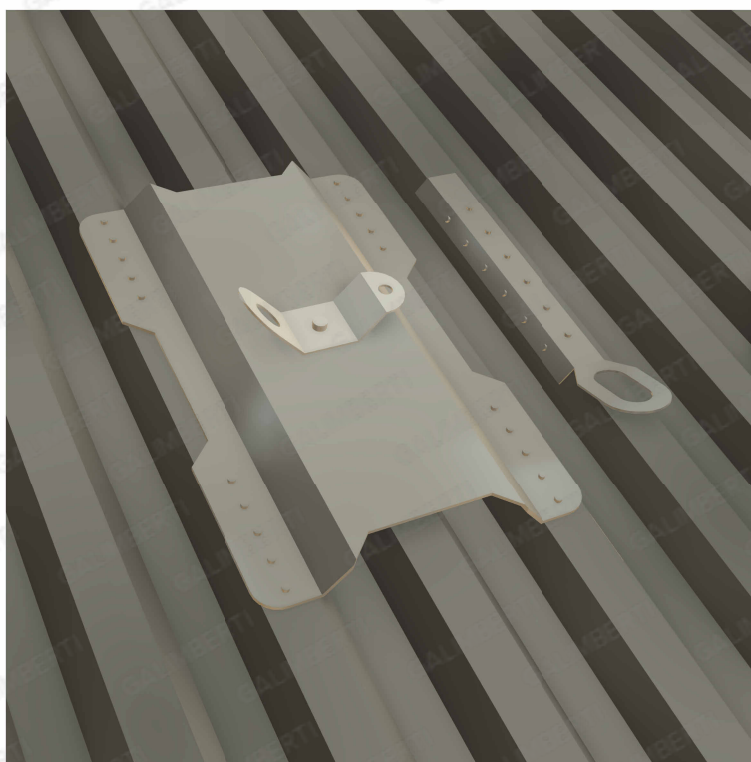
*EP.500 - Palo antenna su tegole



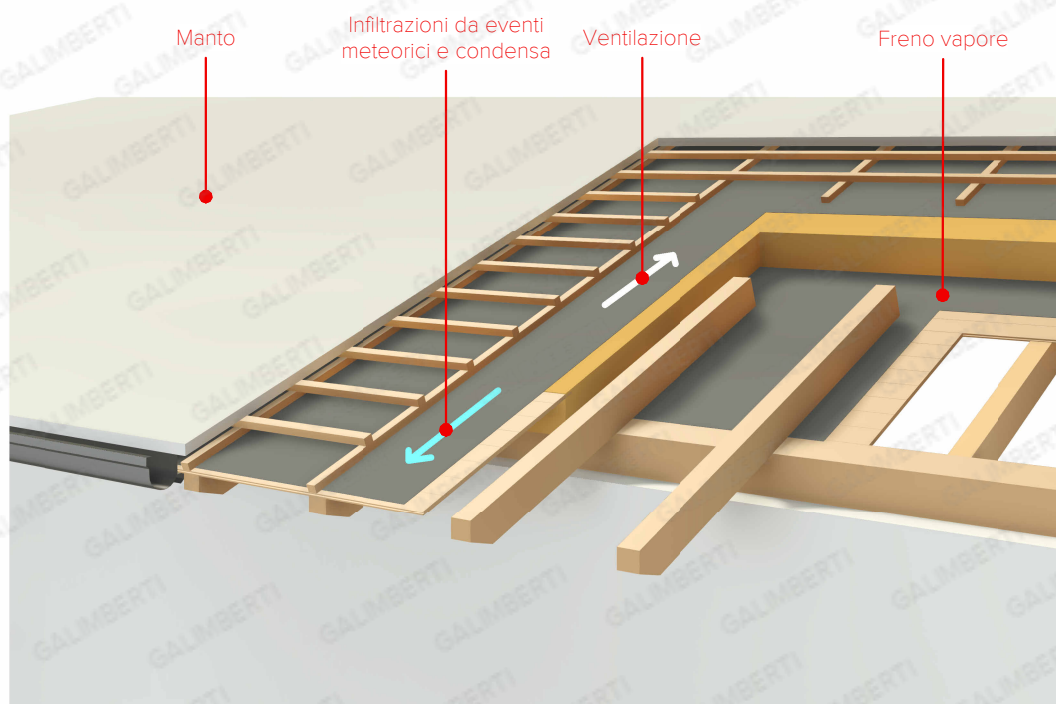
*EP.520 - Palo antenna su grecata



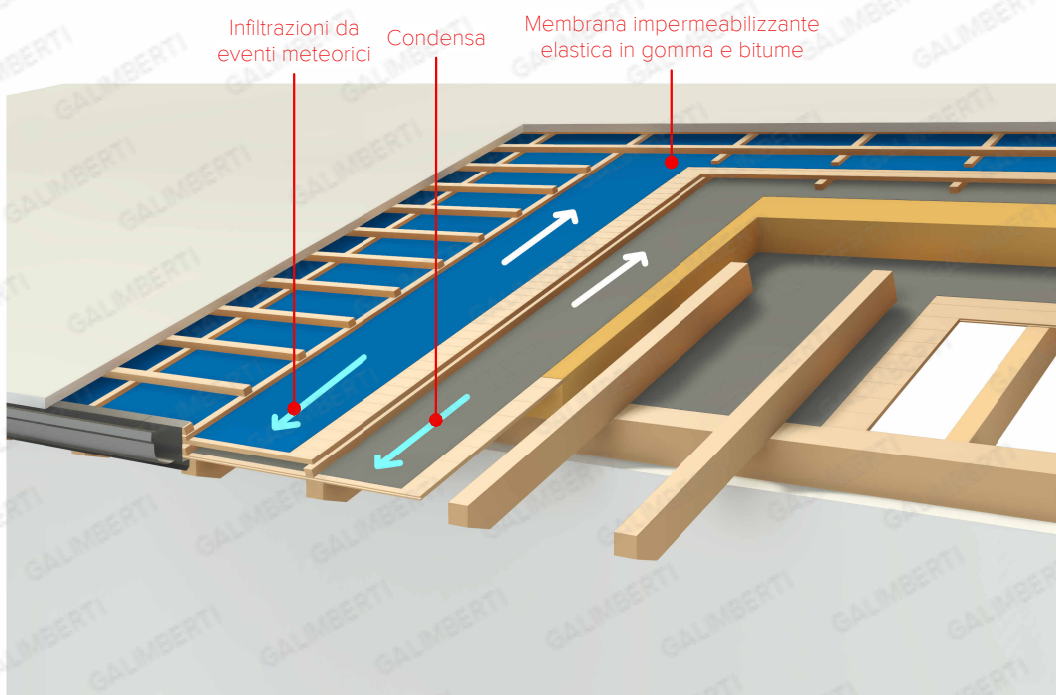
LV.100 - Punto di ancoraggio su tegole



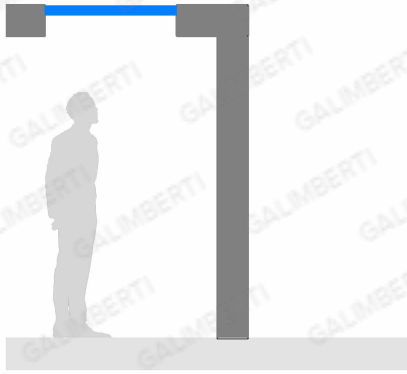
LV.120 - Supporto e punto di ancoraggio su grecata



Ventilazione singola



Ventilazione doppia



01 - Senza gronda



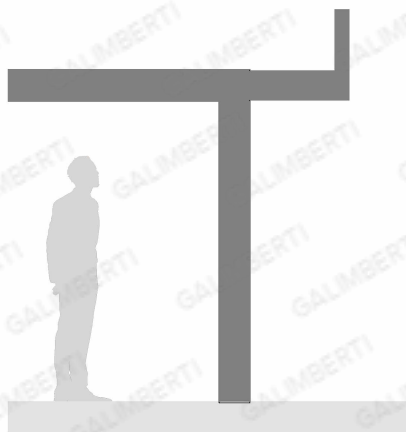
02 - Gronda alta



03 - Gronda ribassata



04 - Muretto a filo



05 - Muretto su aggetto



06 - Aggetto su muretto



07 - Aggetto rampante

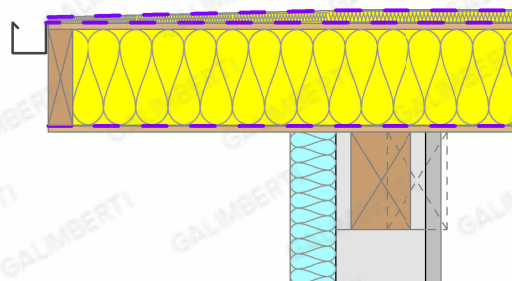
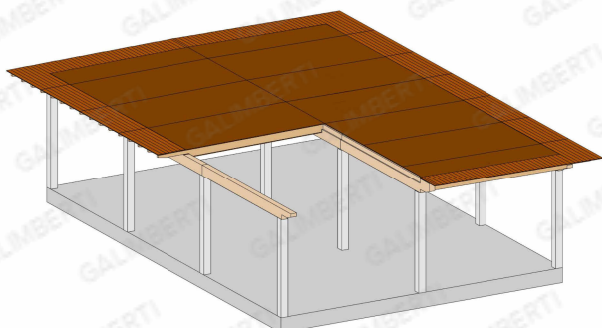


08 - Alla francese

LA TUA IDEA:

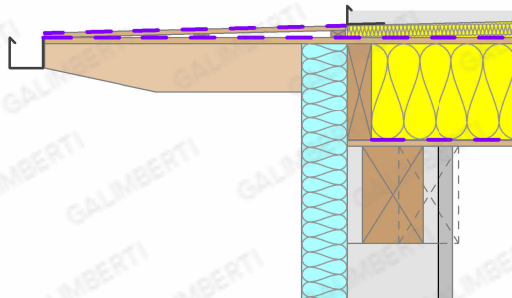


Puoi utilizzare anche linee curve, spezzate e free form



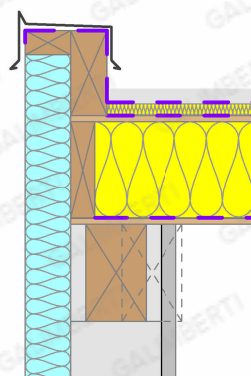
Correa annegata o interna

00 - Gronda alta

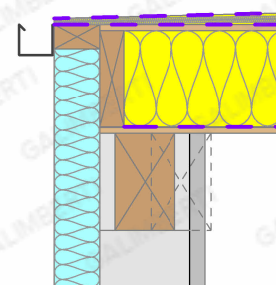


Correa annegata o interna

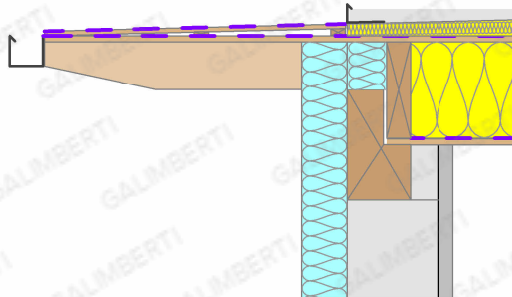
01 - Gronda ribassata
Canale esterno



02 - Muretto
Smaltimento acque interno

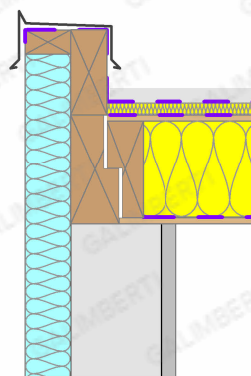


03 - Senza gronda
Canale esterno

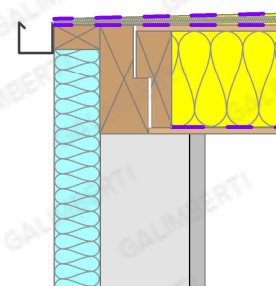


Correa incassata

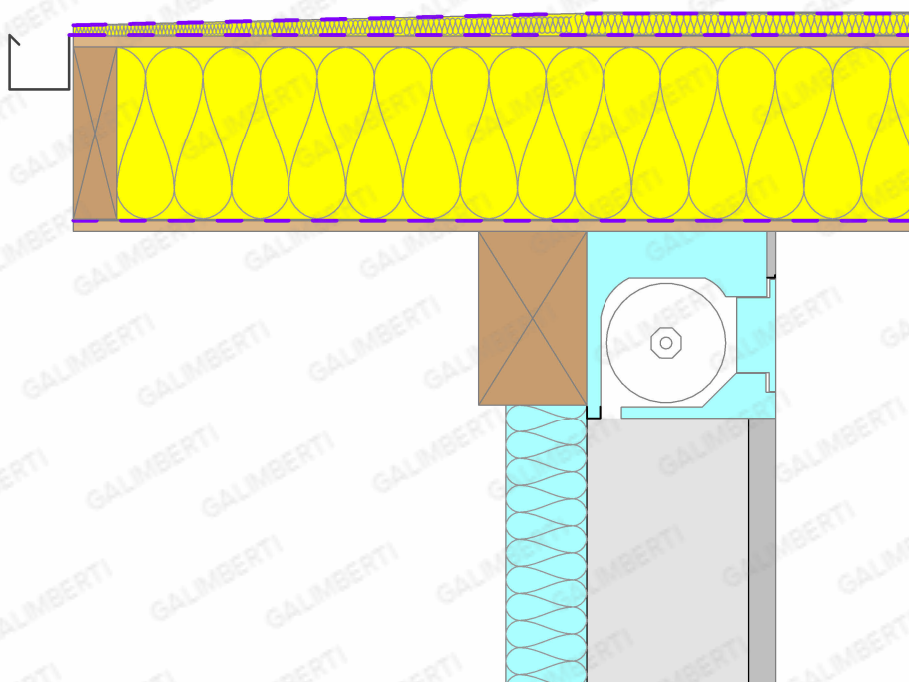
05 - Gronda ribassata
Canale esterno

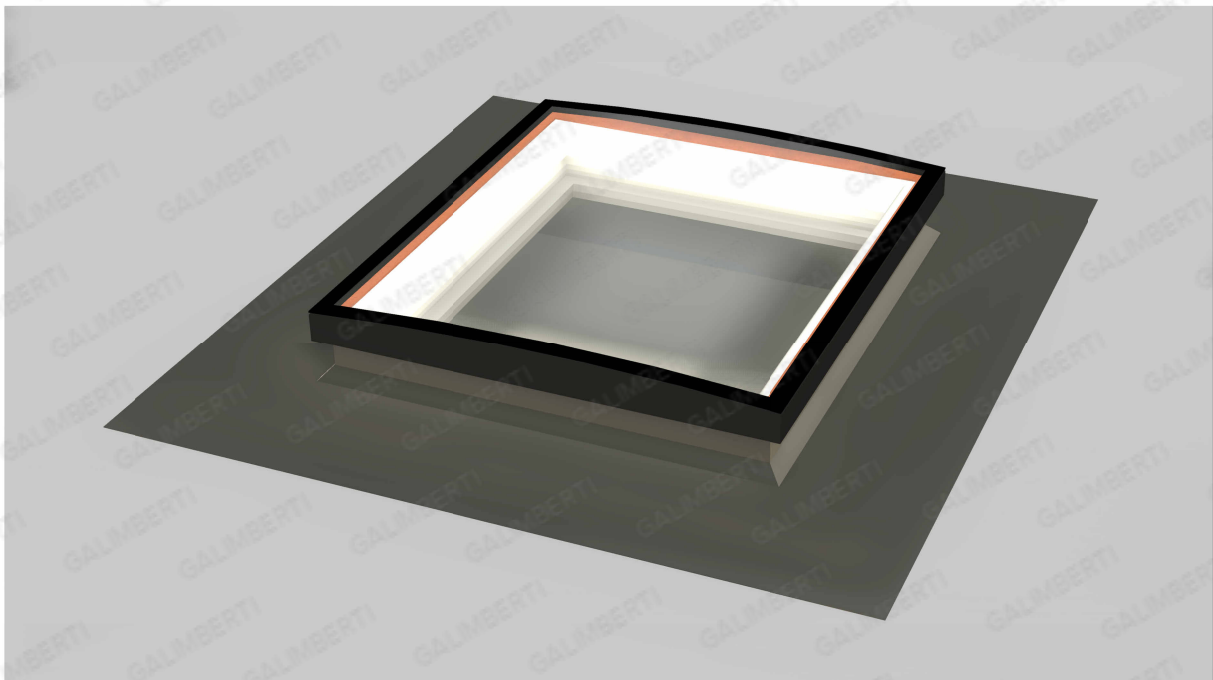
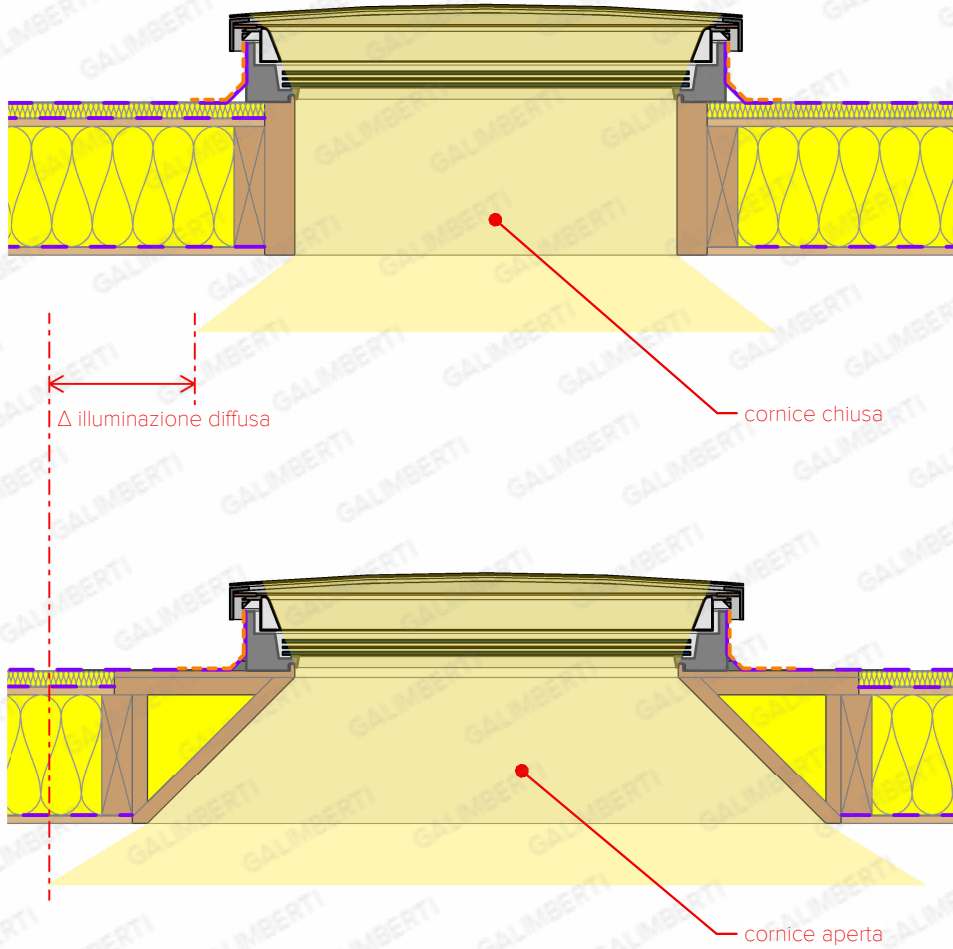


06 - Muretto
Smaltimento acque interno

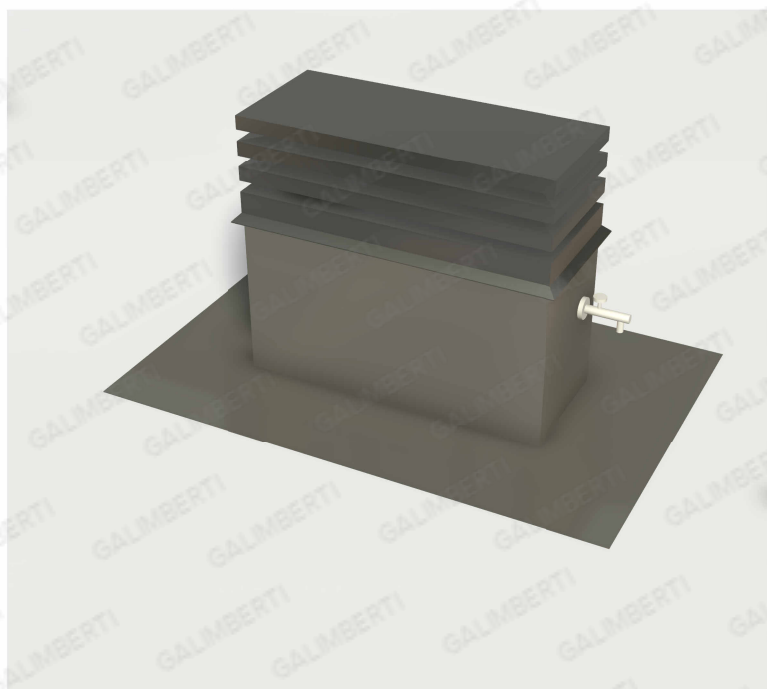
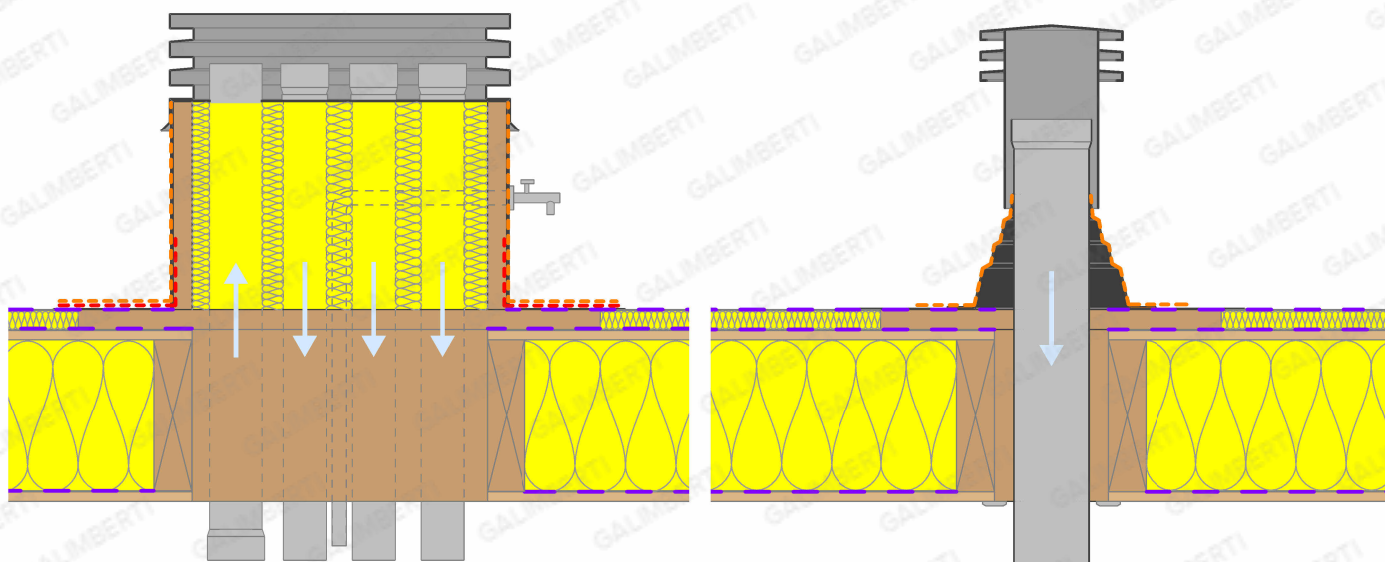


07 - Senza gronda
Canale esterno





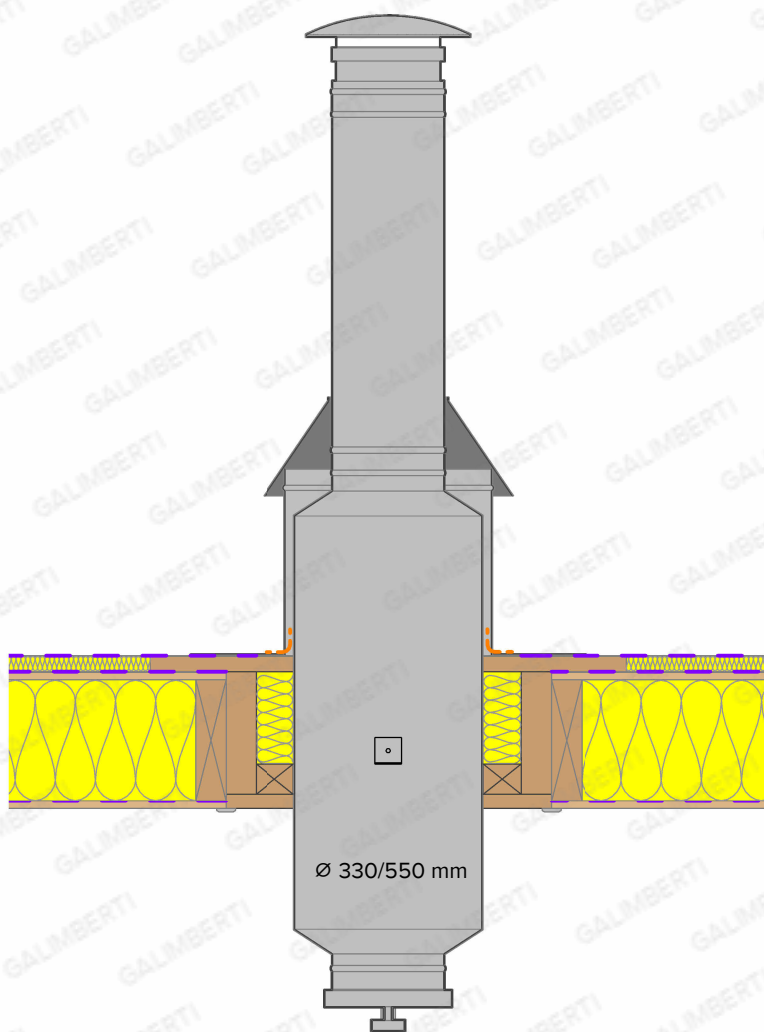
*FT.340 - Finestra a quattro pendenze



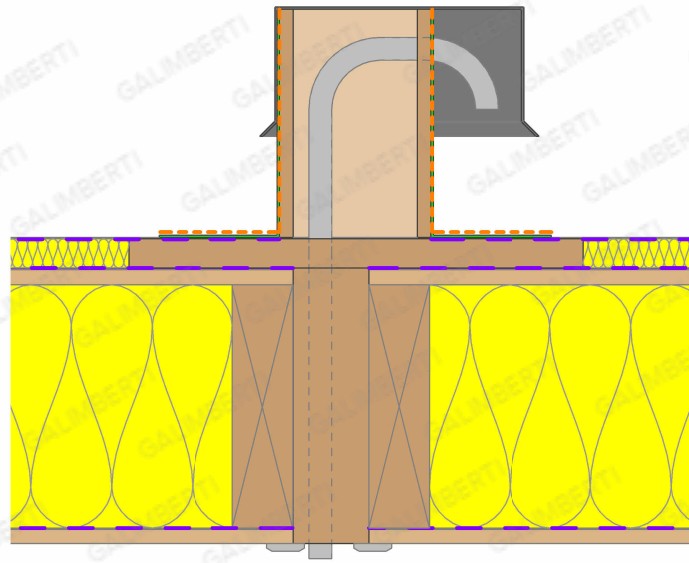
*EP.240 - Aria multitubo



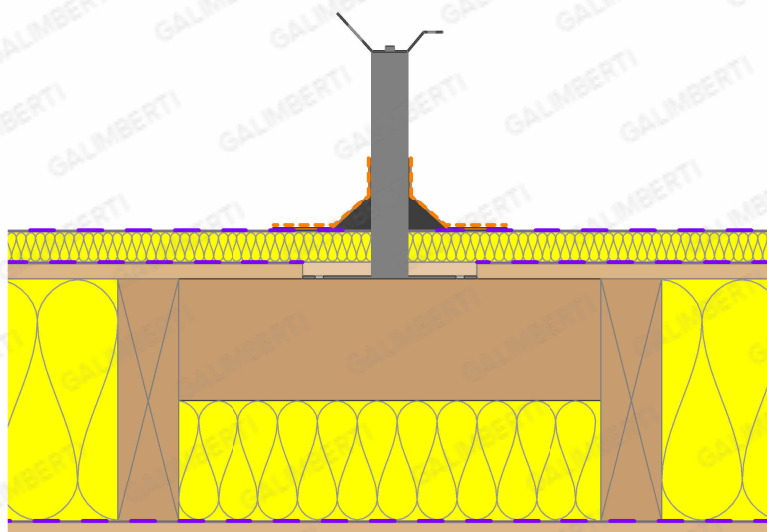
*EP.140 - Aria monotubo



*EP.340 - Fumi



*EP.440 - Elettrico



LV.240 - Palo linea vita